

# INFILL SYSTEMS US LLC

## Company Profile and Services:

Infill Systems US is a limited liability corporation registered in the United States. Infill Systems US is in business to sell products and provide advising and architectural services that support developers achieve adaptable, long-lived buildings, called open building.

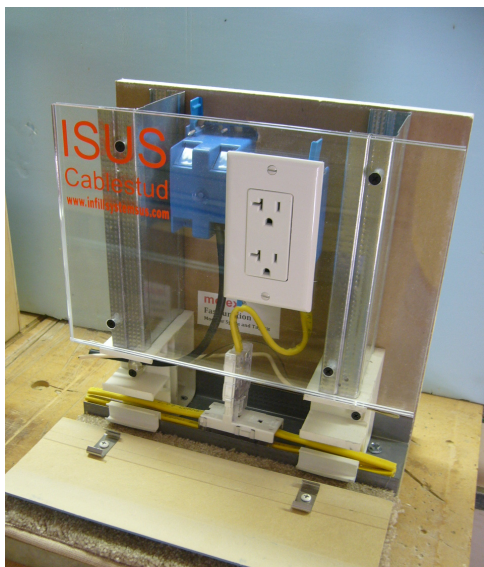
Open Building constitutes a set of methods that include architectural design strategies for assuring that buildings can accommodate a variety of uses and floor plans in a given base building design. This is effective both in new construction and in the gut rehab of older buildings. Investing in base buildings that can accommodate a variety of tenant spaces is familiar in office and retail buildings, and is increasingly appearing in multi-family residential and mixed-use projects internationally.

ISUS's managing director is Stephen Kendall. Dr. Kendall is a registered architect and has a PhD in Architecture from MIT. He is an internationally recognized expert, lecturer and author in the field of open building. Dr. Kendall has the know-how to help architects and developers conduct methodical "capacity analysis" of proposed base building designs. Application of this method provides decision flexibility for the developer and choice to occupants, initially and over the life of the building.

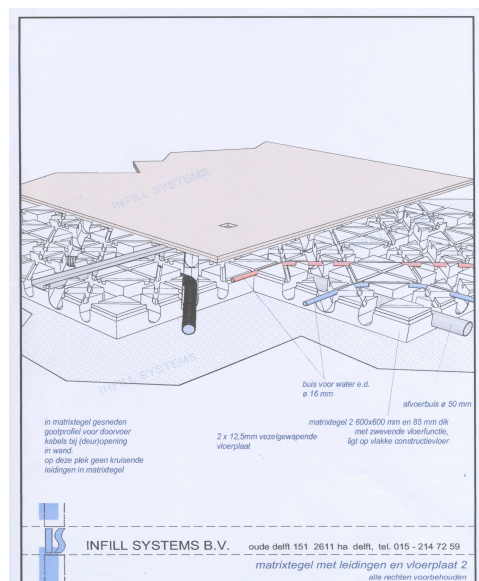
## Infill System US products:

Leading open building projects now include products that help assure flexibility in use within demised spaces, and that avoid floor penetrations at plumbing fixtures. These solutions reduce the conflicts that come about when decisions regarding floor plans change during construction and when floor plans and user preferences change over the life of the building.

ISUS has the exclusive license in the United States for two key open building products, the intellectual property for which is owned by Infill Systems BV in Delft, the Netherlands. One is CABLESTUD. The other is a system for managing pipes and ducts within a demised space, called MATRIX TILE SYSTEM. Detailed information can be found in the ISUS website.



CABLESTUD



MATRIX TILE SYSTEM

**Contact Information:** Stephen H. Kendall, Managing Director  
220 West Durand Street, Philadelphia, PA, USA  
765.749.1312 / [sk@infillsystems.com](mailto:sk@infillsystems.com) / [www.infillsystems.com](http://www.infillsystems.com)