



Infill System products offer

- decision flexibility to developers
- choice to users
- adaptability over time

THUS - long-lasting real estate assets

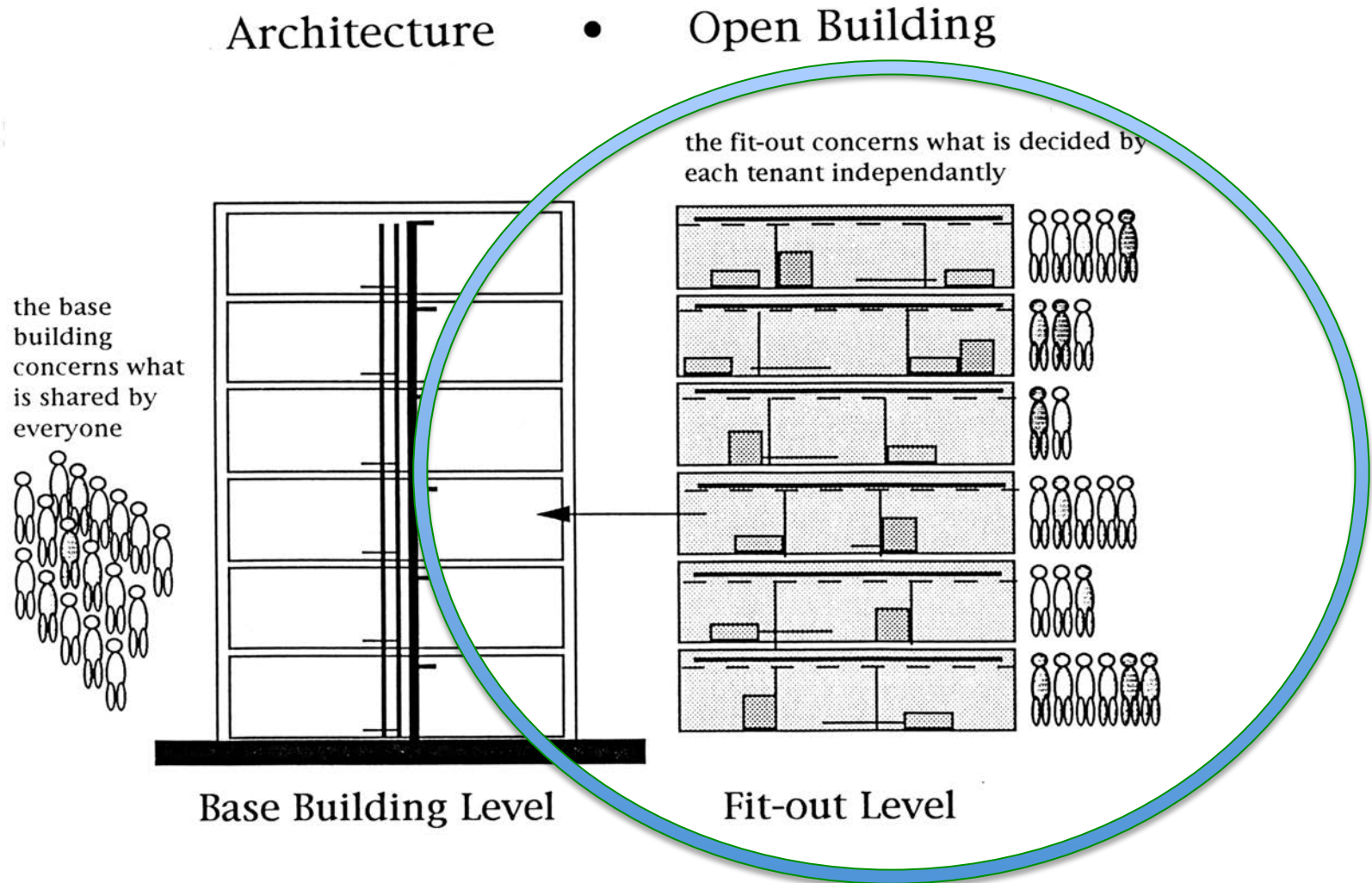
ISUS PRODUCTS SOLVE PROBLEMS in new construction





...and in upgrading existing buildings

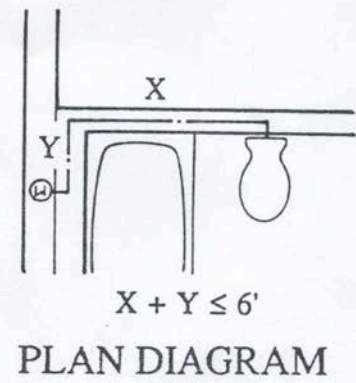
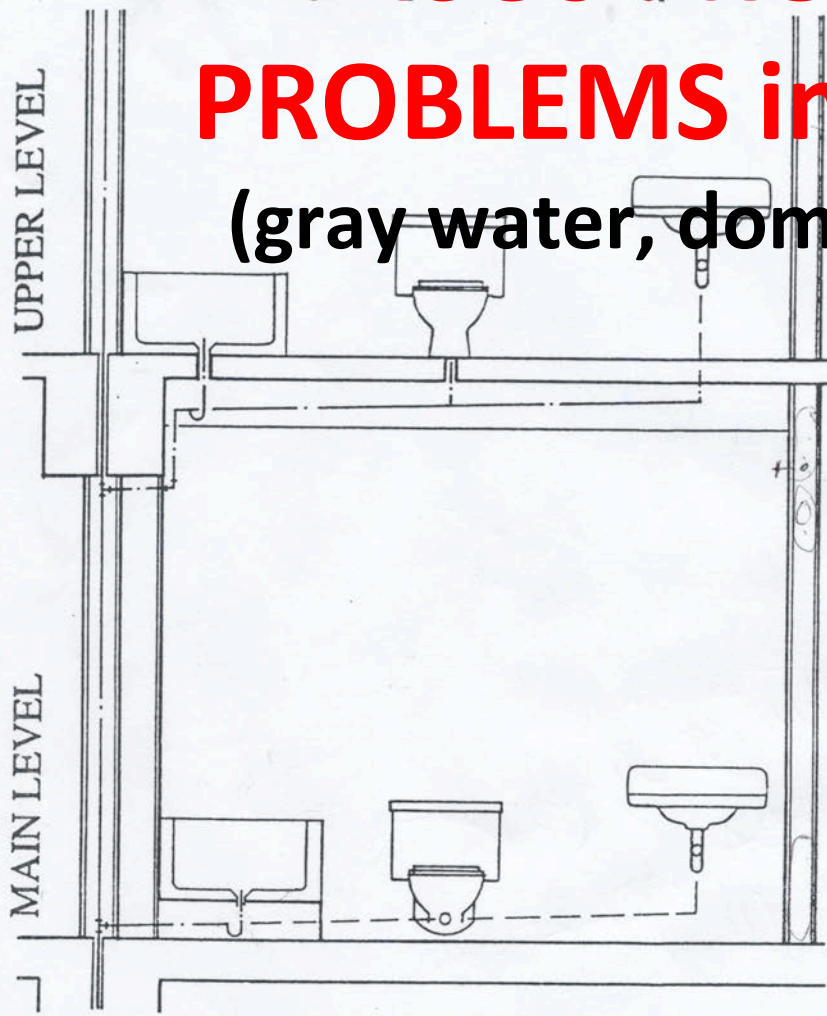
Infill System products support the second phase of 2-step development processes



Tub/Shower: no special requirements for fixture type or location, drain lines are required within depth of floor structure
 Water Closet: no special requirements for fixture type or location
 Sink/Lavatory: no special requirements for fixture type or location

ISUS PRODUCTS SOLVE PROBLEMS in HANDLING PIPES

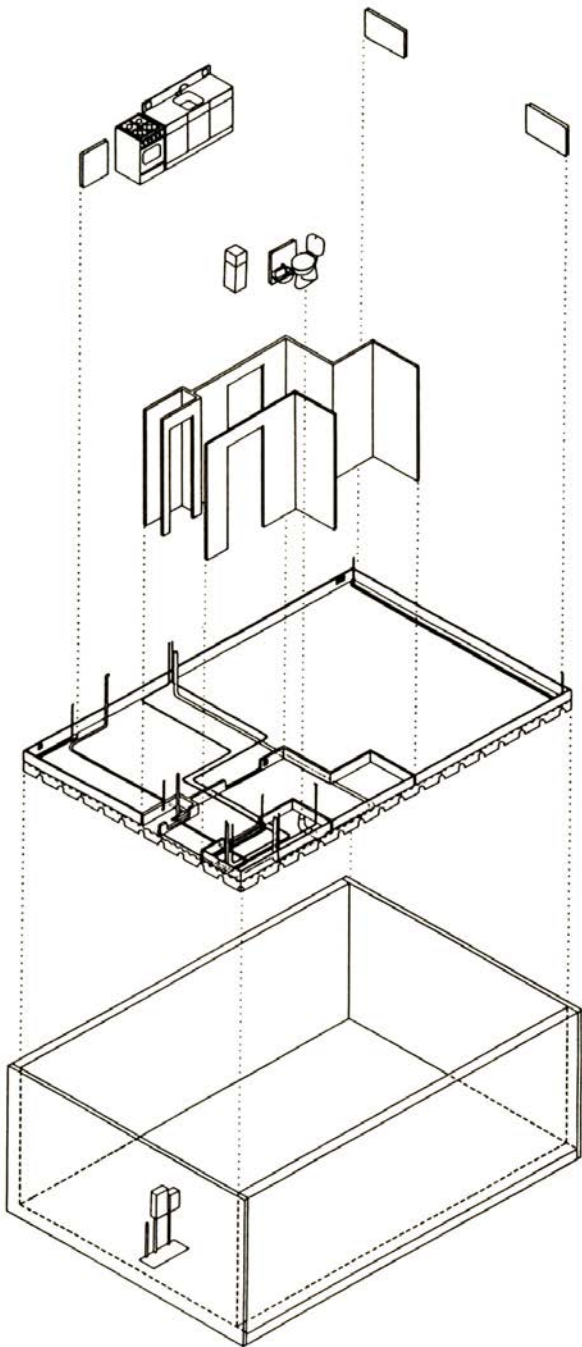
(gray water, domestic water supply, gas)



Tub/Shower: raised platform required for clearance of drain trap and the slope of the drain line
 Water Closet: rear discharge/wall mounted fixture required, location limited in plan distance from waste line
 Sink/Lavatory: no special requirements for fixture type or location

PLUMBING FIXTURE DIAGRAM





The “upper system” of consumer electronics

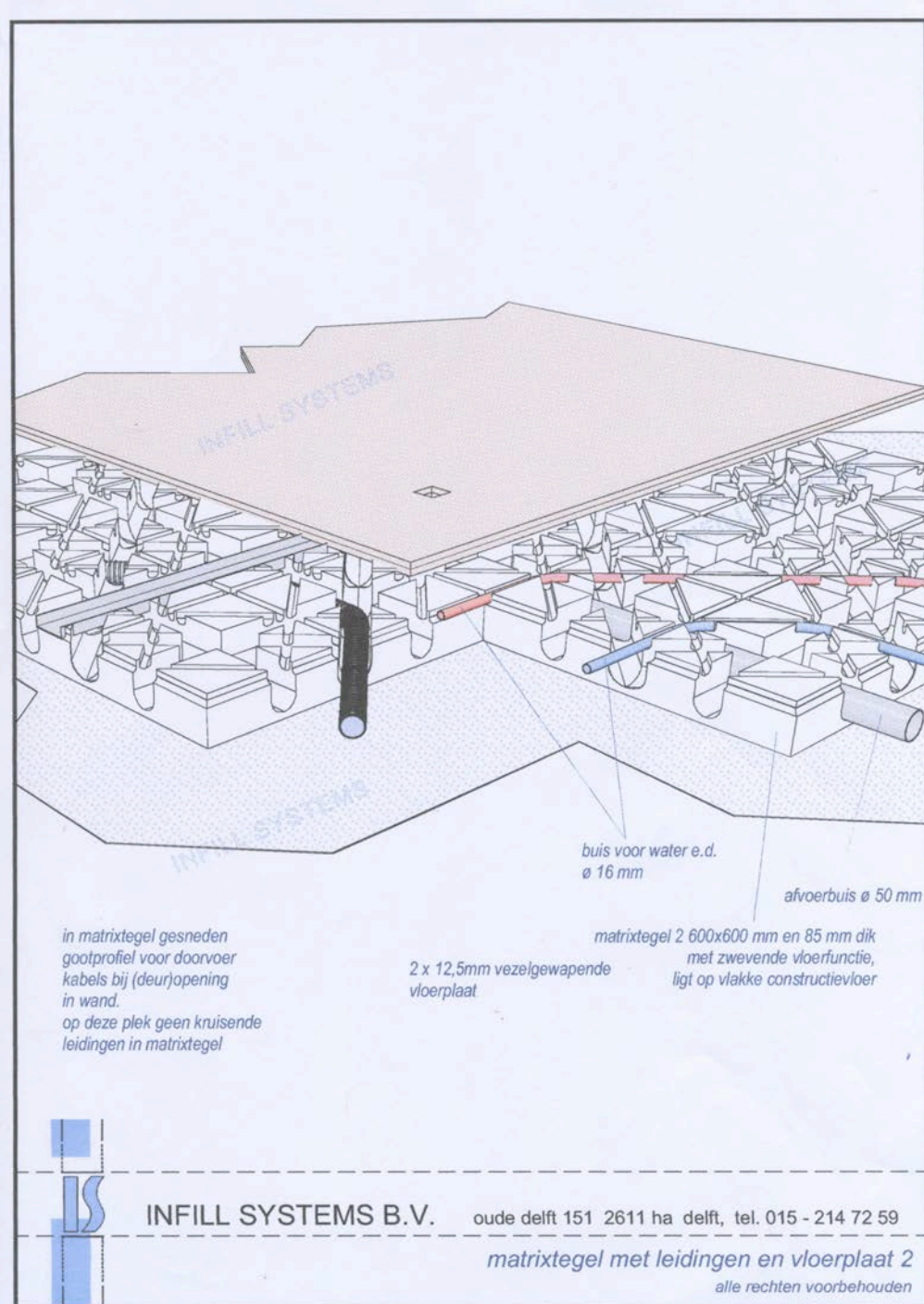
CABLESTUD

The “lower system” solving piping/ duct layout problems

MATRIX TILE

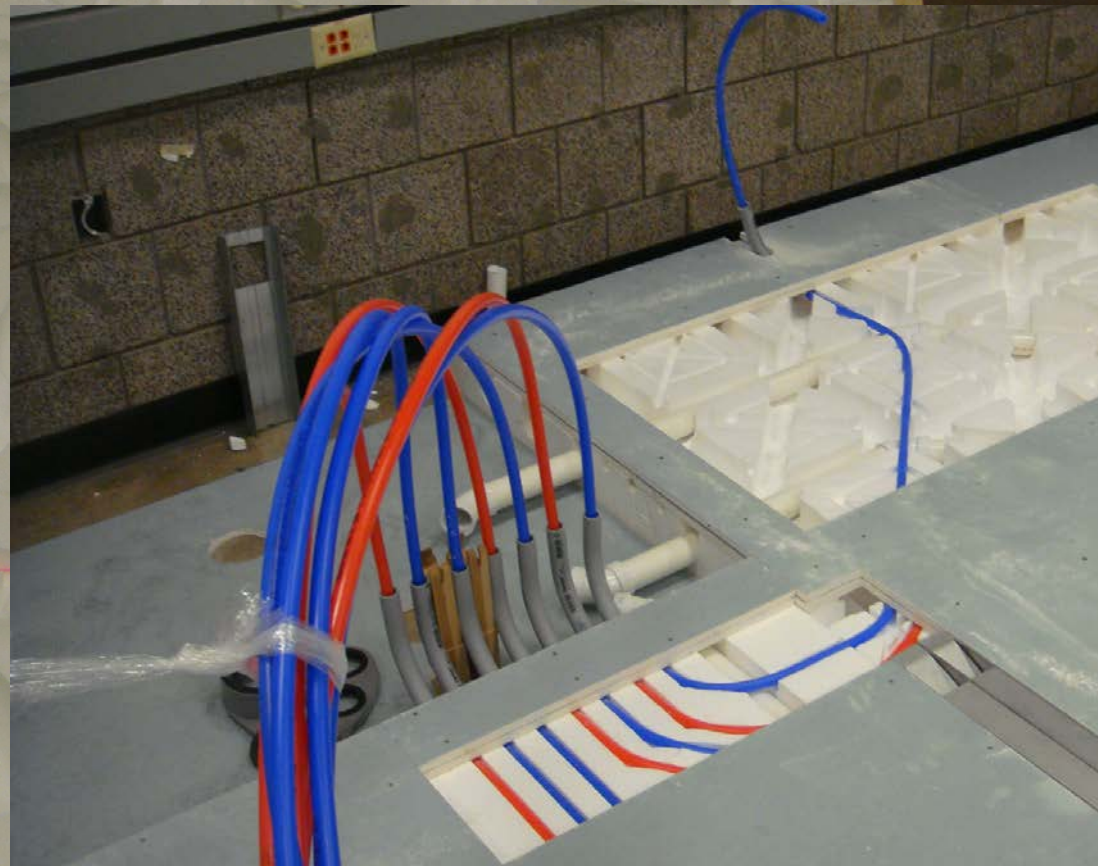
Fitting into a serviced open space (in a new building or a gut-rehab job)

Matrix Tile System



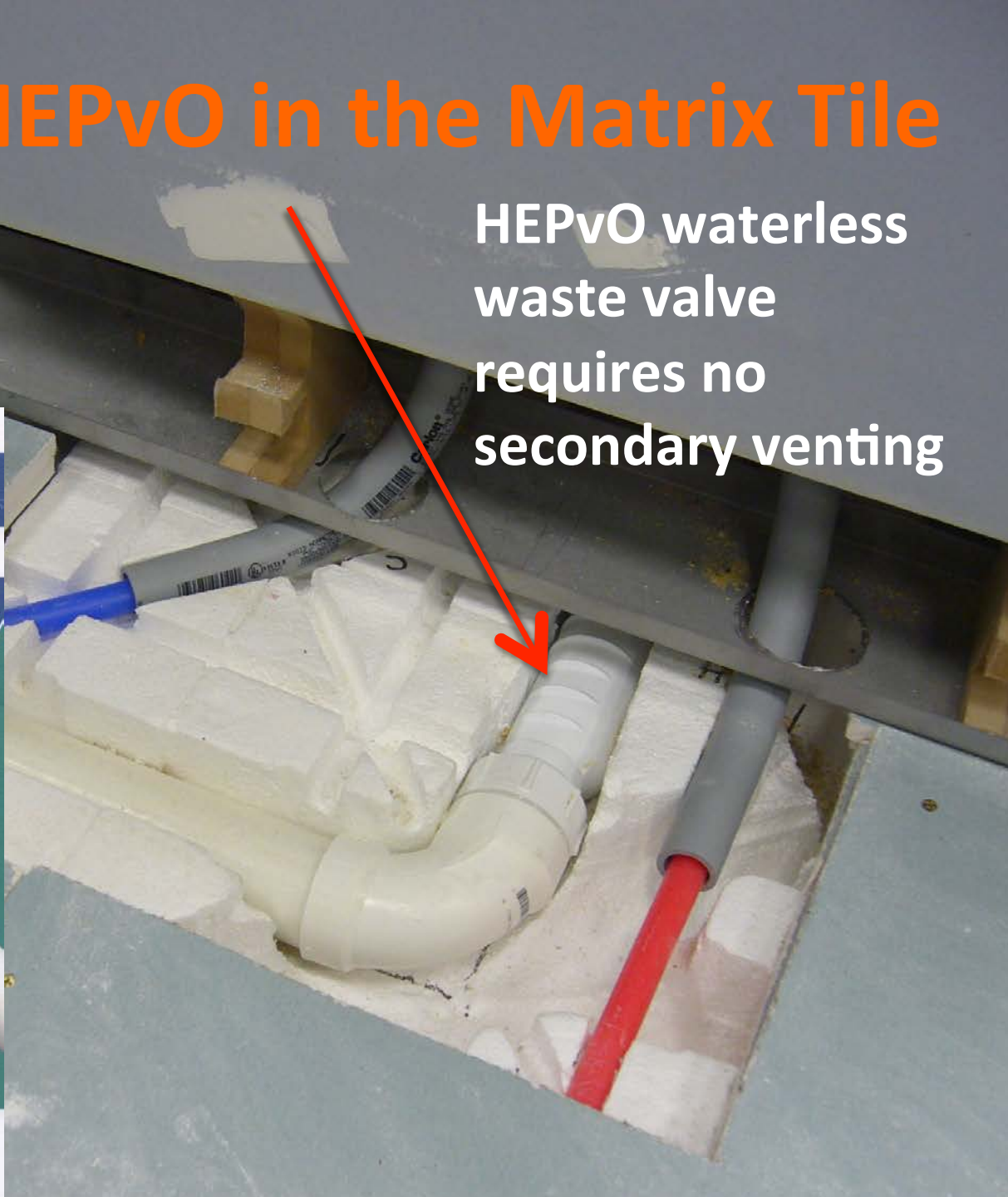
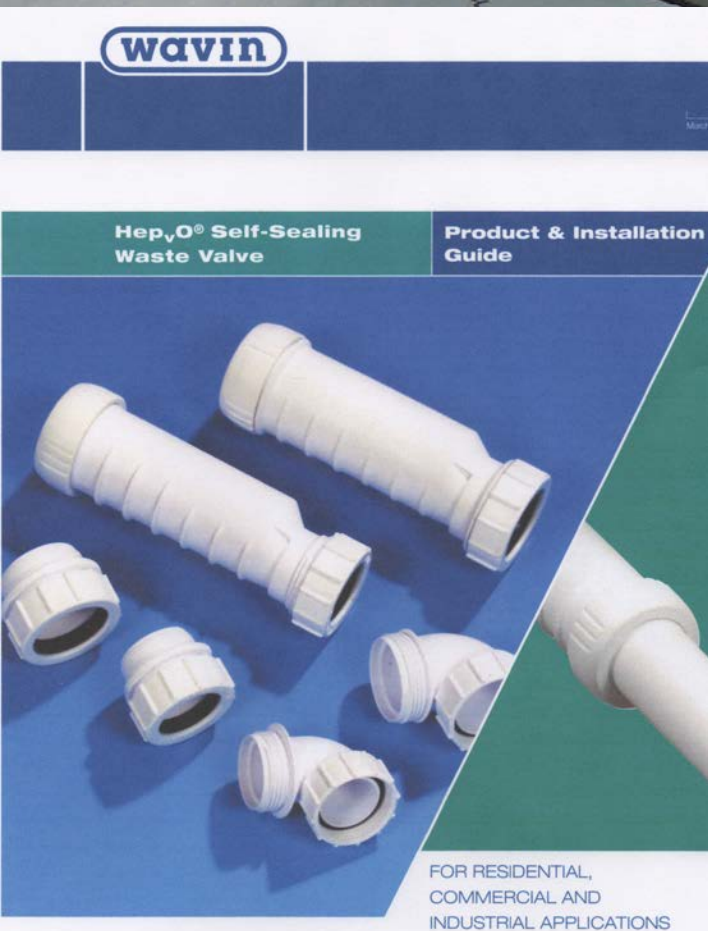
Matrix Tile System

Matrix tiles, “home-run” Pex piping, 0-slope gray water drain lines (“sucking system” with no branching or venting); covered by a fireproof floor layer



HEPvO in the Matrix Tile

HEPvO waterless
waste valve
requires no
secondary venting

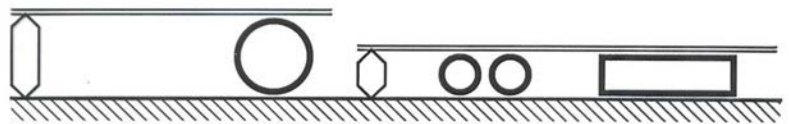


OLD WAY

NEW WAY



Space-requirement



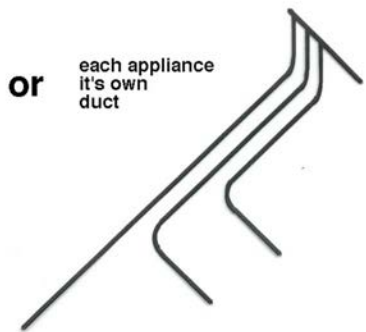
height of channel, raised floor or suspended ceiling

either or

Flexible fitting

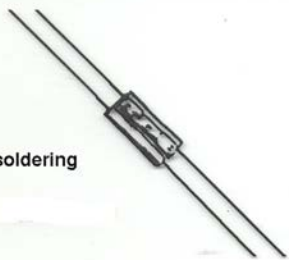


branching off

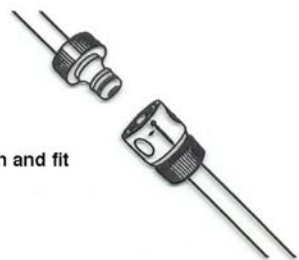


or each appliance it's own duct

New fitting techniques

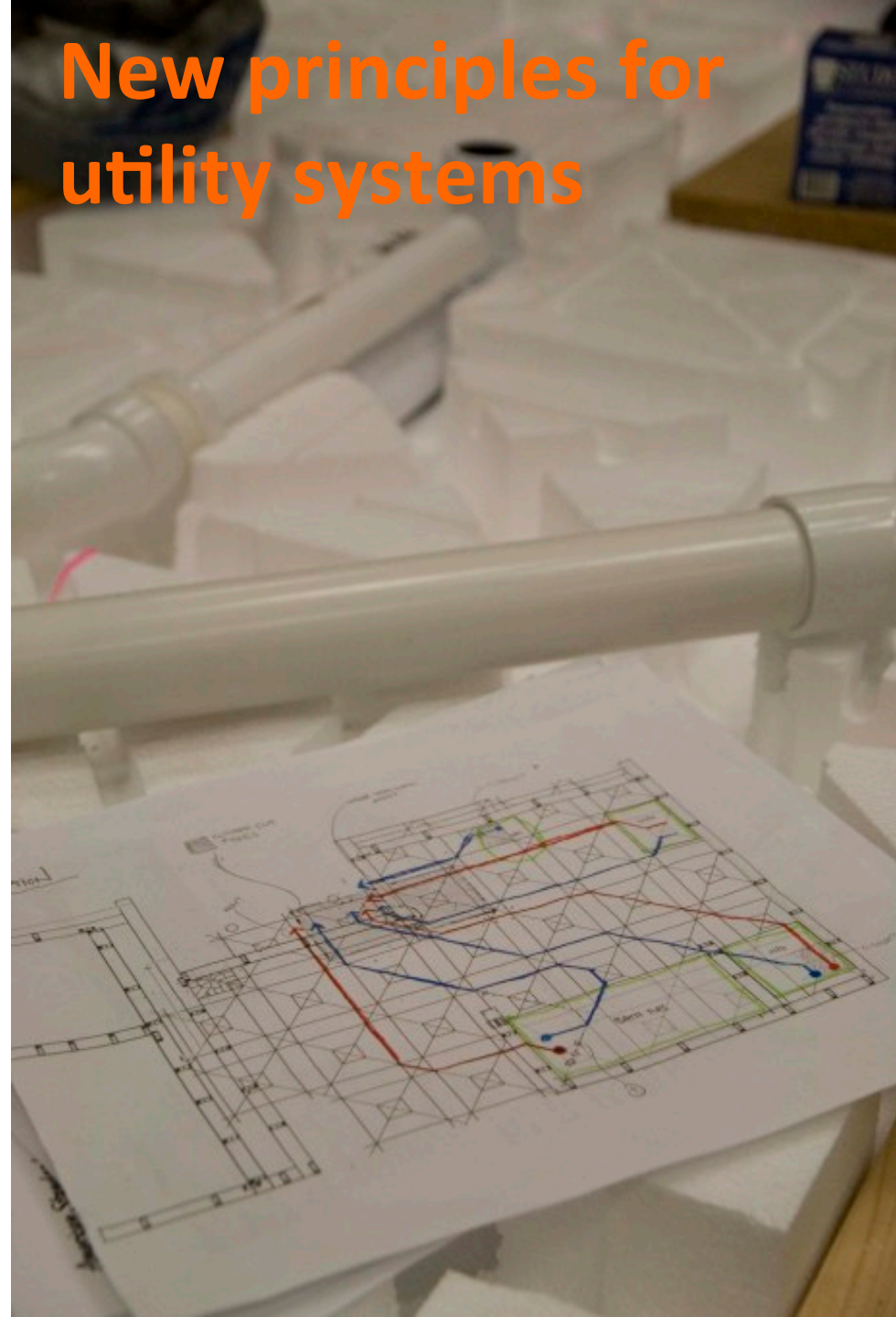


soldering



or push and fit

New principles for utility systems



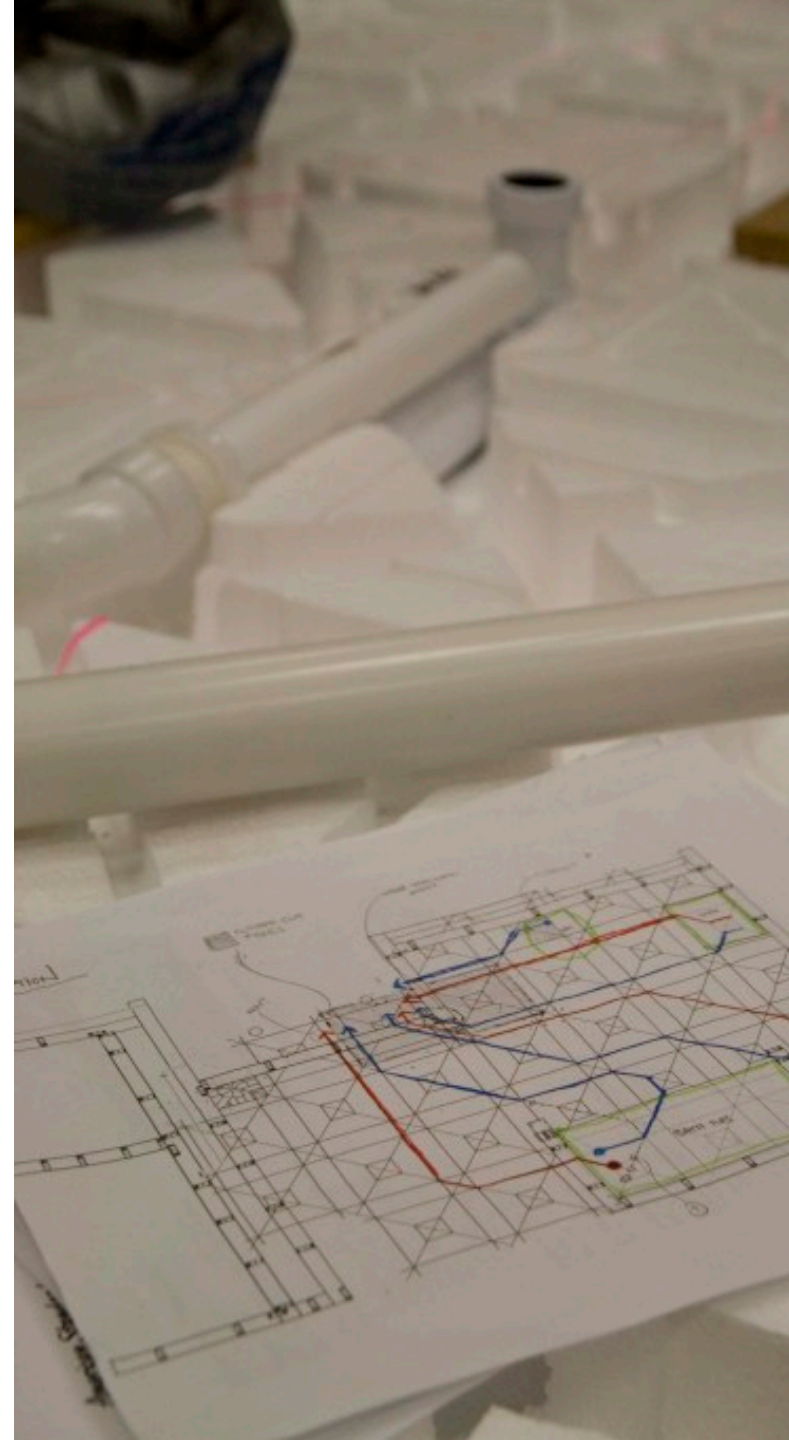
ADVANTAGES

- *for DEVELOPERS*

1. **Decision flexibility on floor plans and equipment**
2. **Reduced cost and time for customization**
3. **One-unit-at-a-time rehab**
4. **Improved sound isolation between floors**

- *for BUILDERS*

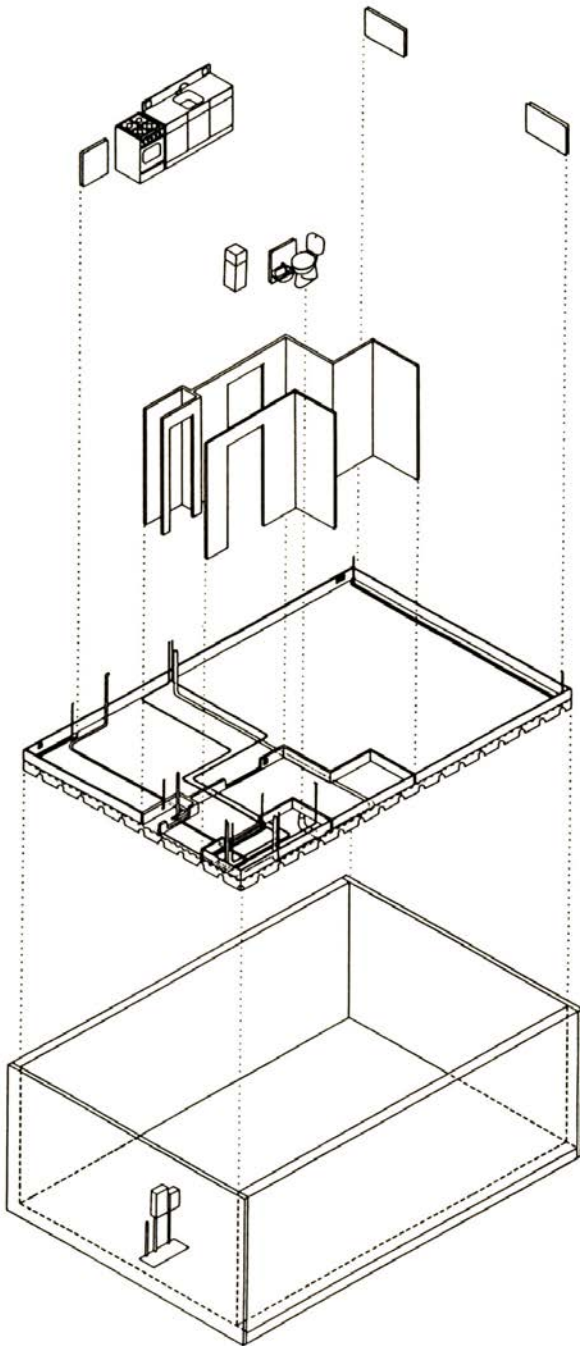
1. **Increased quality, coordination and cost control**
2. **No floor penetrations at fixtures**
3. **Easier maintenance (all plumbing is within a unit)**



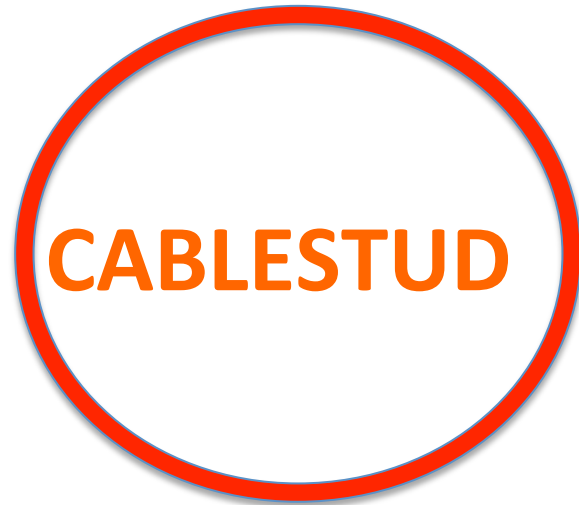


CableStud

the invisible solution to smart wiring



The “upper system” of consumer electronics



The “lower system” solving piping/duct layout problems

MATRIX TILE

Fitting into a serviced open space (in a new building or a gut-rehab job)

ISUS PRODUCTS SOLVE PROBLEMS in HANDLING WIRING



CableStud



MAXI-Strut
(3 5/8" studs)



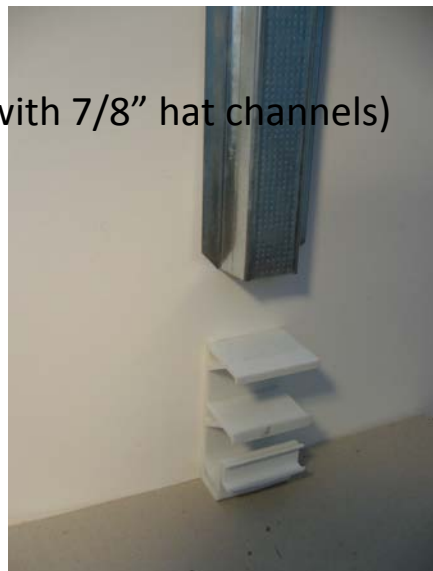
MIDI-Strut
(2 1/2" studs)



MINI-Strut
(1 1/2" hat channels)

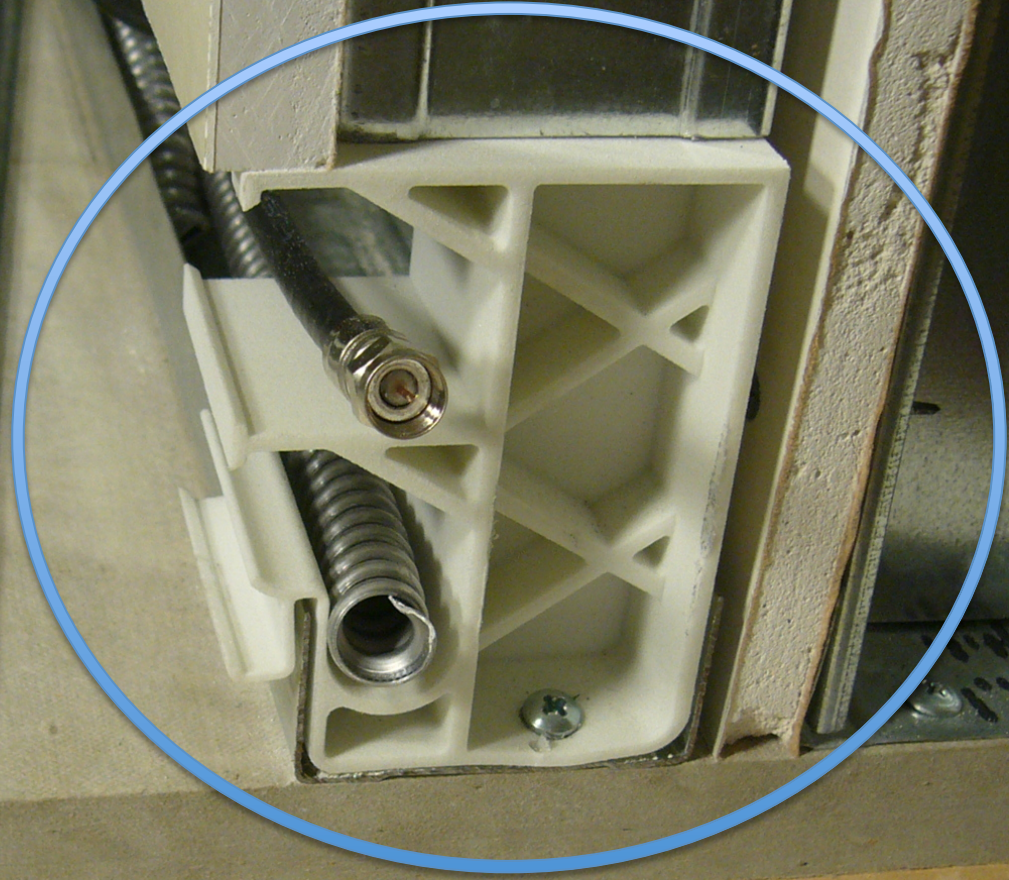


MICRO-Strut
(useful in wood-frame and with 7/8" hat channels)

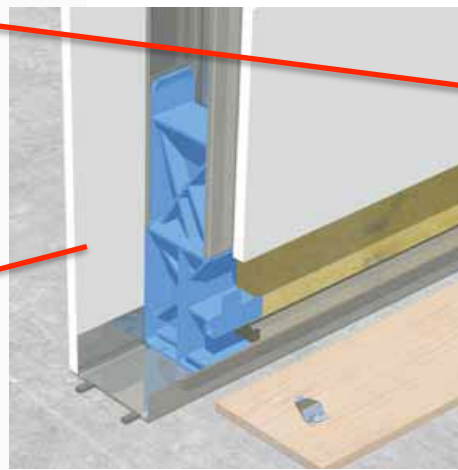
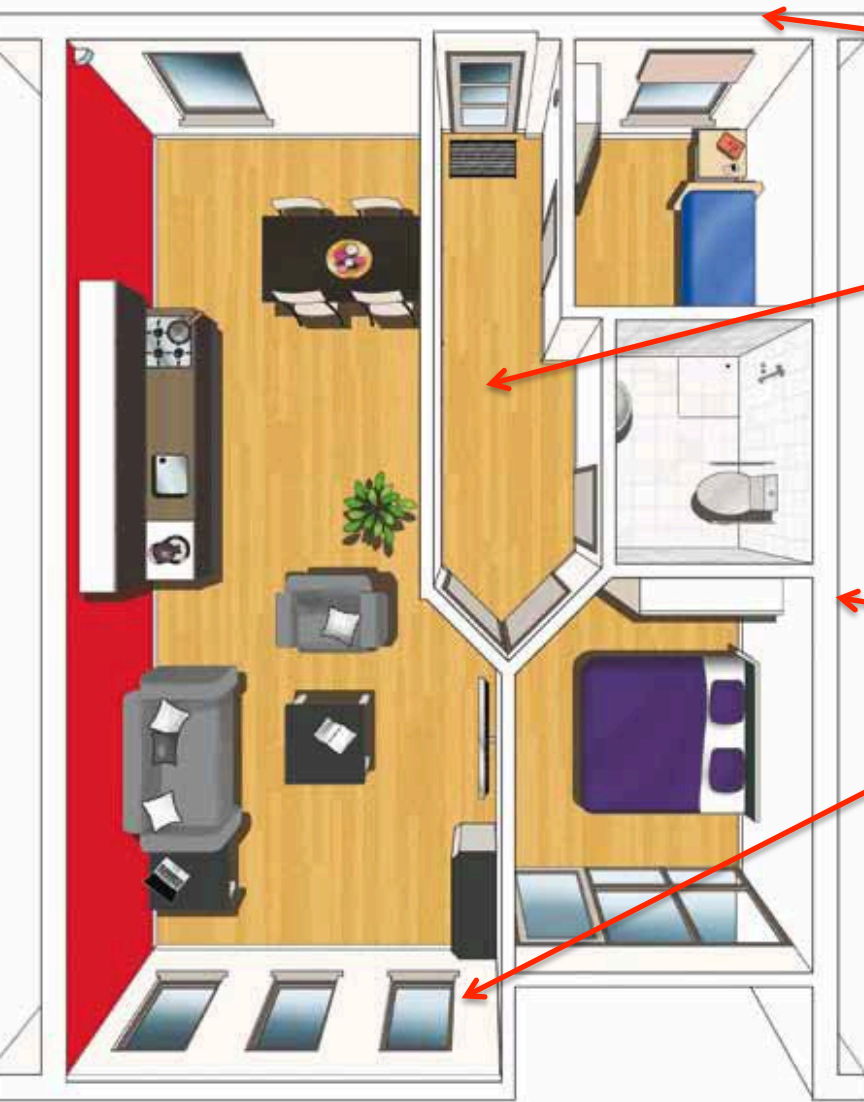


Wood base clip

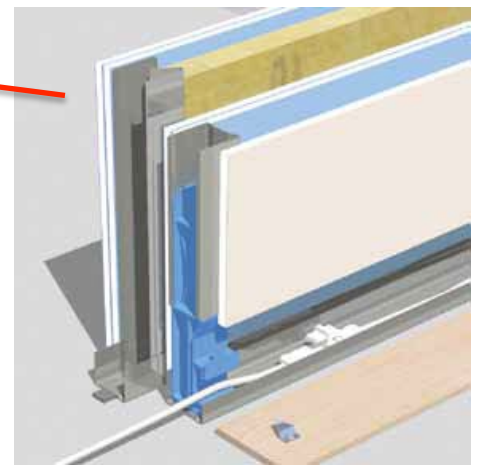
CableStud



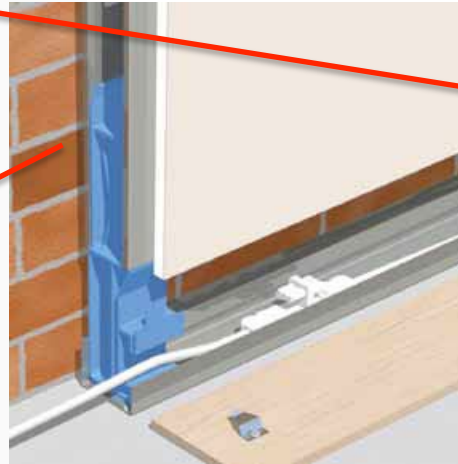
CABLESTUD with backer plate for vinyl base



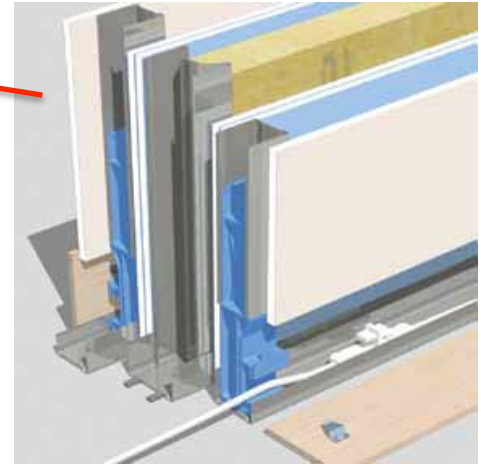
Typical partition wall



Liner wall against fire rated corridor wall



Liner wall against exterior wall



Liner walls on both sides of a unit separation wall

CABLESTUD wall types to meet all conditions

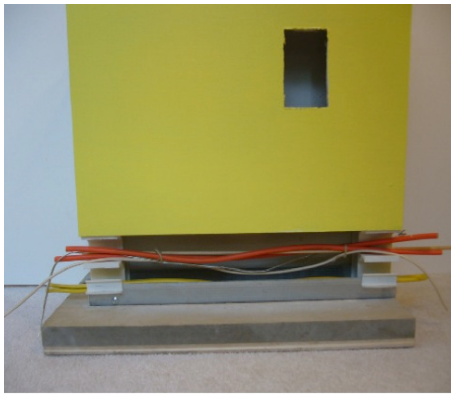


Delivery of metal studs with struts installed

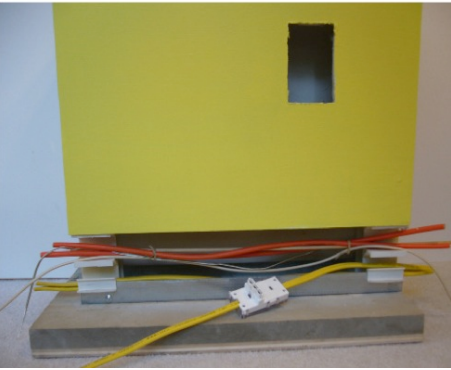


CABLESTUD Installation

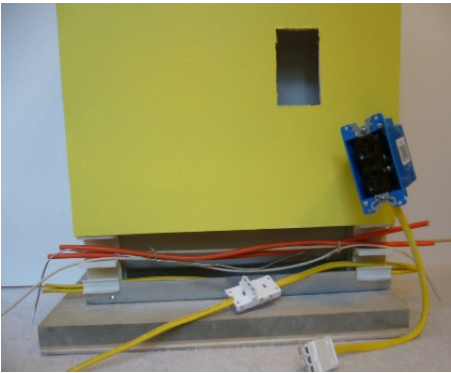




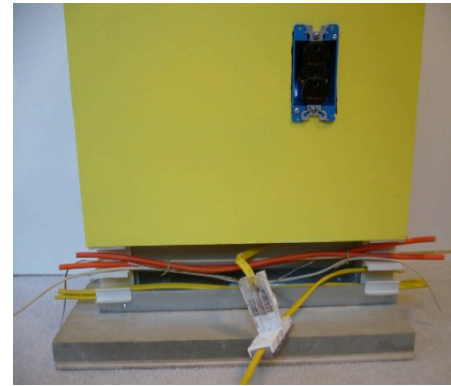
Step 1: remove baseboard; cut a hole in the drywall for the new device in desired position



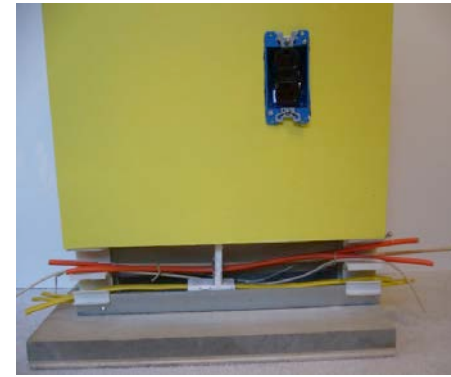
Step 2: select NM wire you want to tap into; install MOLEX self-contained power connector



Step 3: wire a "rework" box with NM cable and attach a MOLEX "tap" to the other end



Step 4: insert junction box and drop cable into space behind the baseboard and snap into the Molex connector



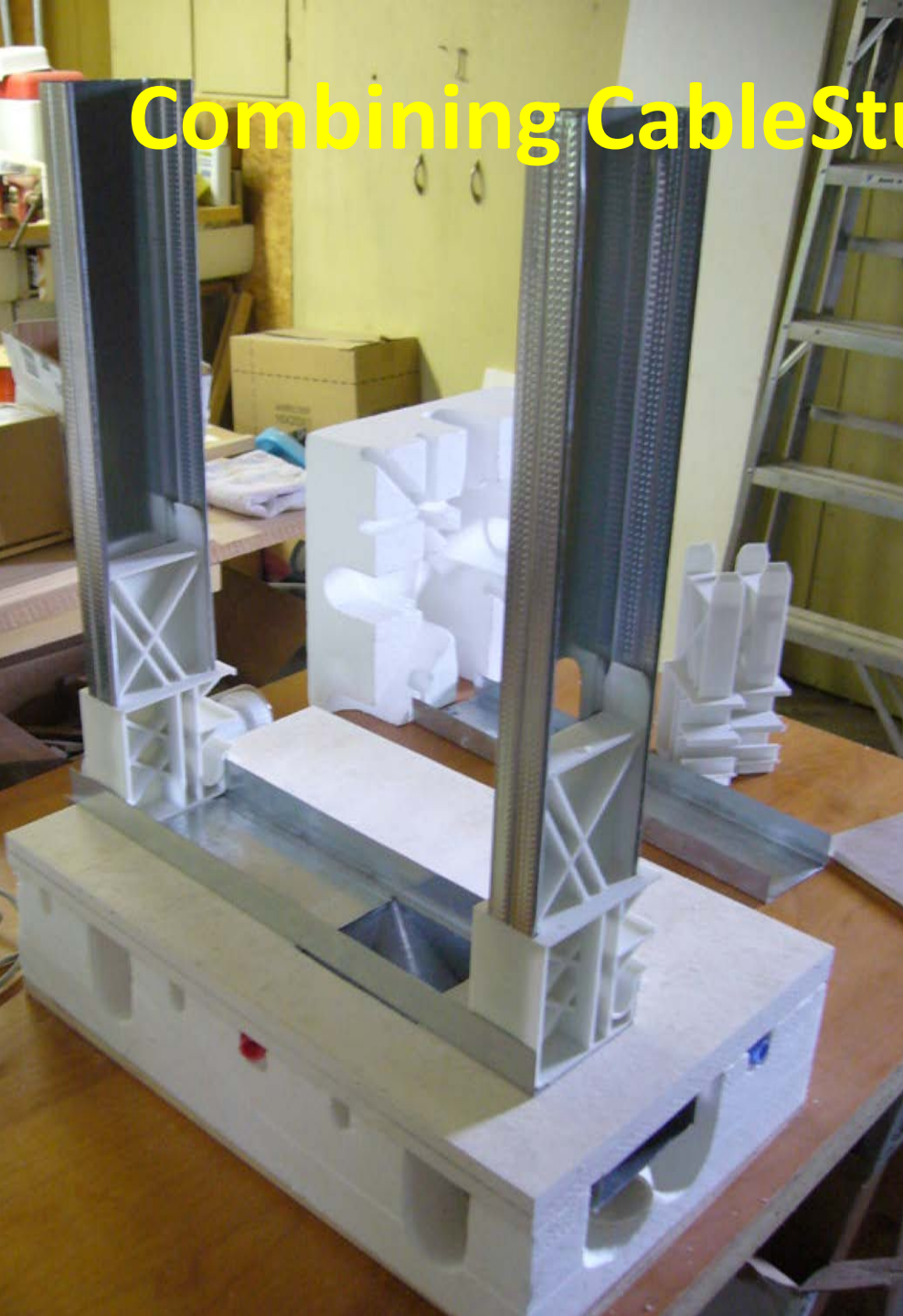
Step 5: push cable back into the space made available by the CableStud



Step 5: reinstall the baseboard, and install the device in the junction box

CABLESTUD WIRING PROCESS using NM CABLE and MOLEX "self-contained connector and tap"

Combining CableStud and Matrix Tile



ADVANTAGES

- *for DEVELOPERS*

1. Outlets anywhere, anytime
2. Labor savings when data and electric outlets are added or moved

- *for BUILDERS*

1. Simplified mobilization and coordination
2. More organized wiring layout – everyone knows where the wires are
3. Accessible and fast connections behind baseboard



SUMMARY:

- Key innovations are not about style but smart planning;
- Value is added initially in decision flexibility and better organized processes, saving money along the way;
- Value is also added over time – producing real estate assets with long term ROI, because they are easier to adjust to changing circumstances.

