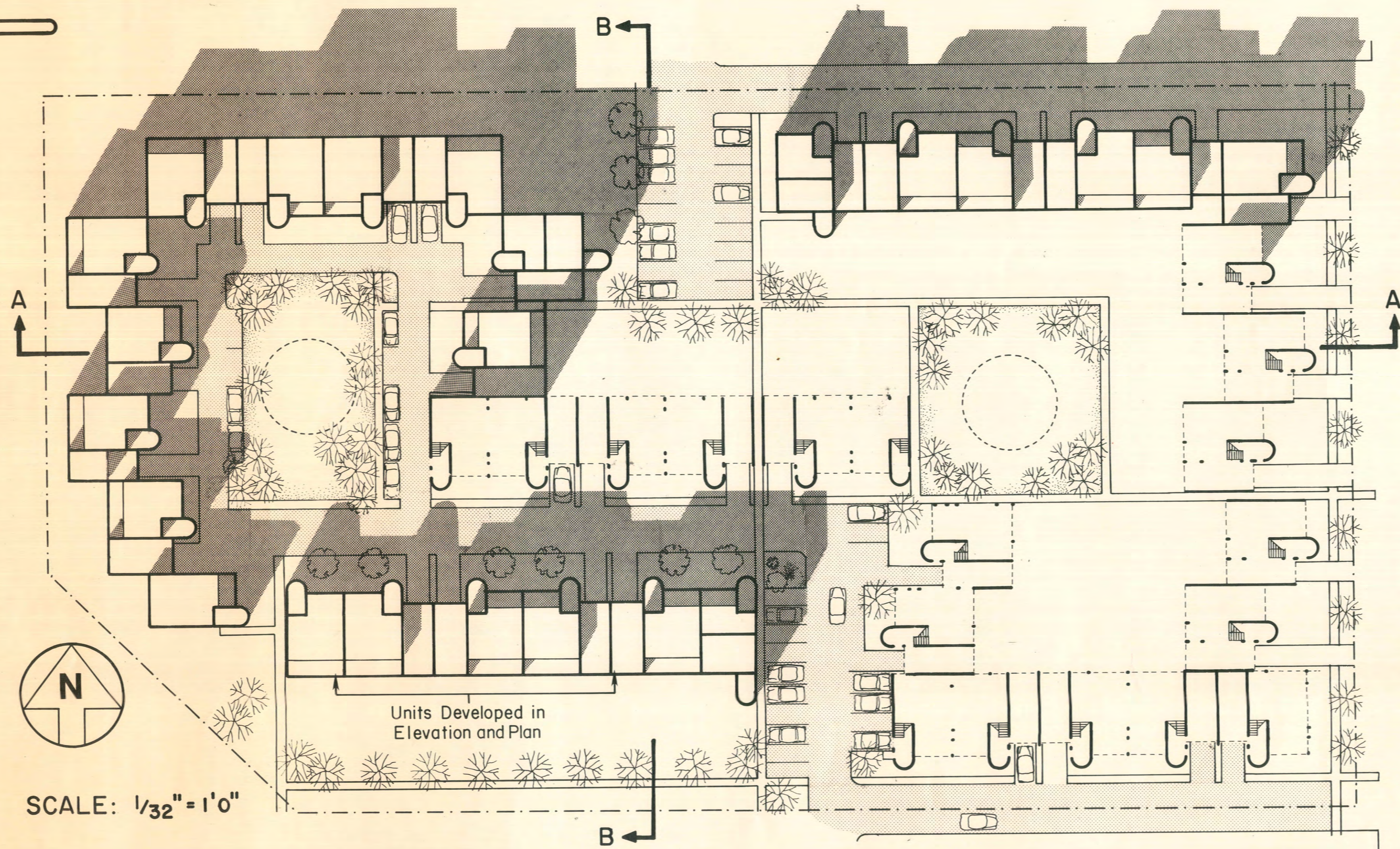


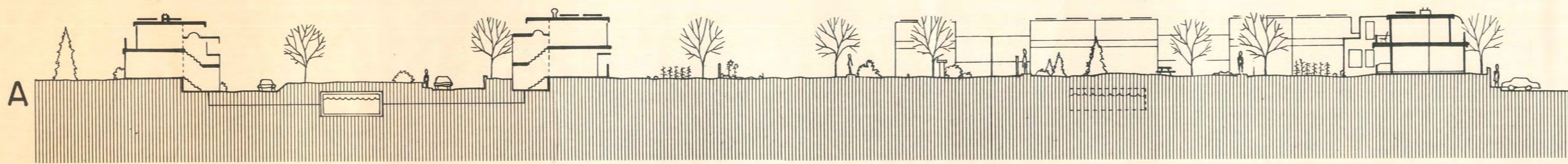
SUPPORT HOUSING

MITOCHONDRIA

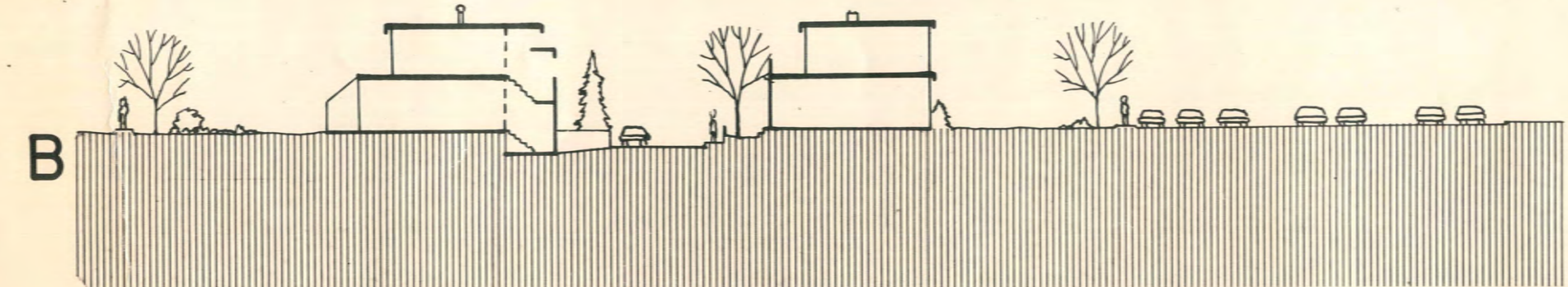
METABOLIC ENGINES WITHIN
 CELLS WHICH CONTAIN ENZYMES
 NECESSARY FOR ENERGY-
 LIBERATING REACTIONS



SCALE: 1/32" = 1'0"



Shadow pattern shown at 2:00 pm, Dec. 21
 Annual-cycle thermal energy storage tank
 • 20' x 40'
 • Collector size: 3000f² (1/4th of the
 units have collectors on
 roof)
 See sheet 3 for system details



SUPPORT HOUSING

"What we must look for, in place of prototypes which are collective interpretations of individual living patterns, are prototypes which make individual interpretations of the collective patterns possible, in other words, we must make houses alike in a particular way, such that everyone can bring into being his own interpretation of the collective pattern..."
 - Hertzberger

- User Participation
- Flexibility
- Shared Infrastructure

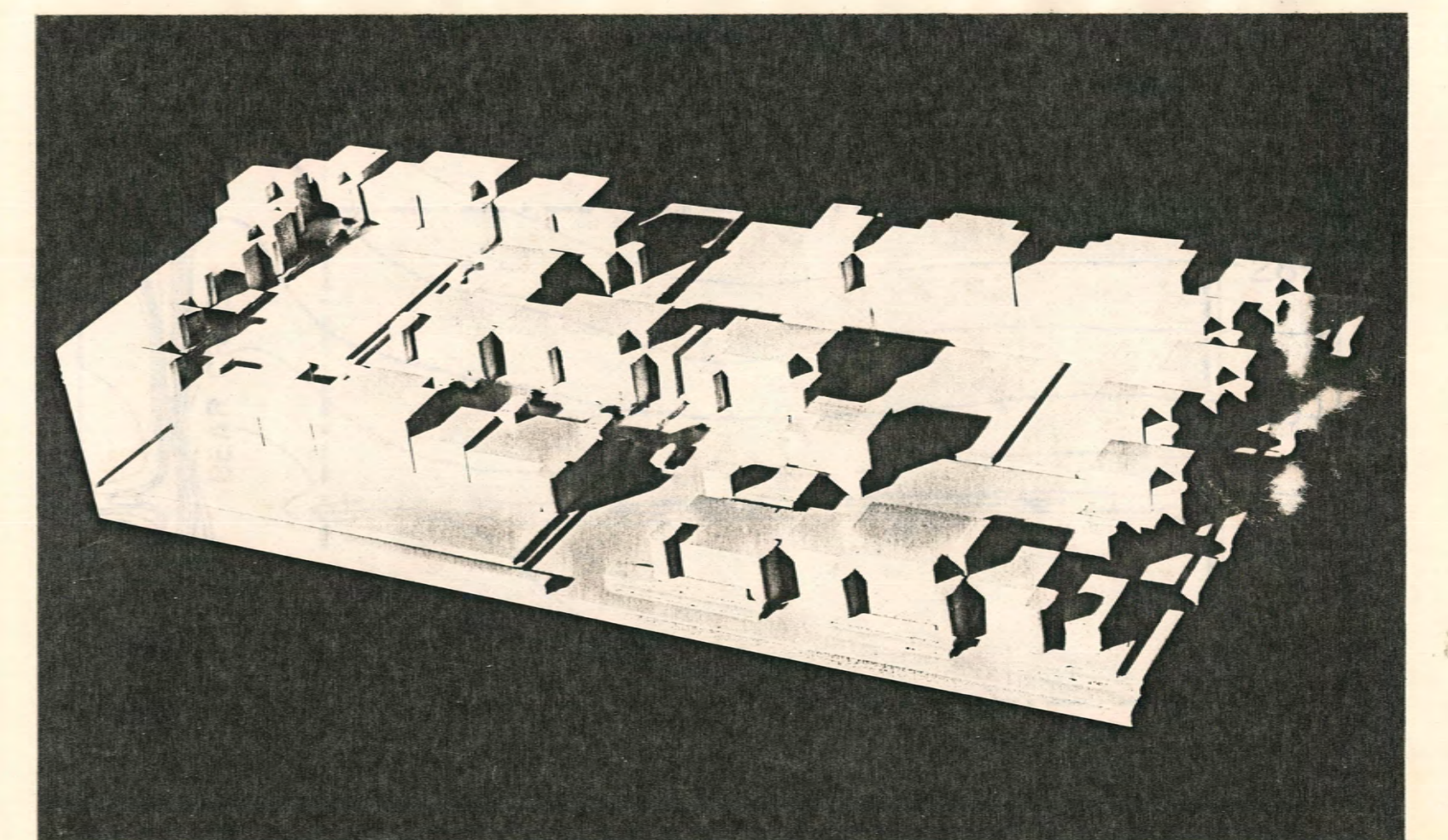
SOLAR ACCESS PERMANENCE

SITE TRANSFORMATION

Model Given	Diversity of community character is encouraged by reducing courtyard size and varying conditions for degrees of activity.	Articulation of plan develops in response to solar access, interior lighting, entrances, garages, and family size.
-------------	---	--

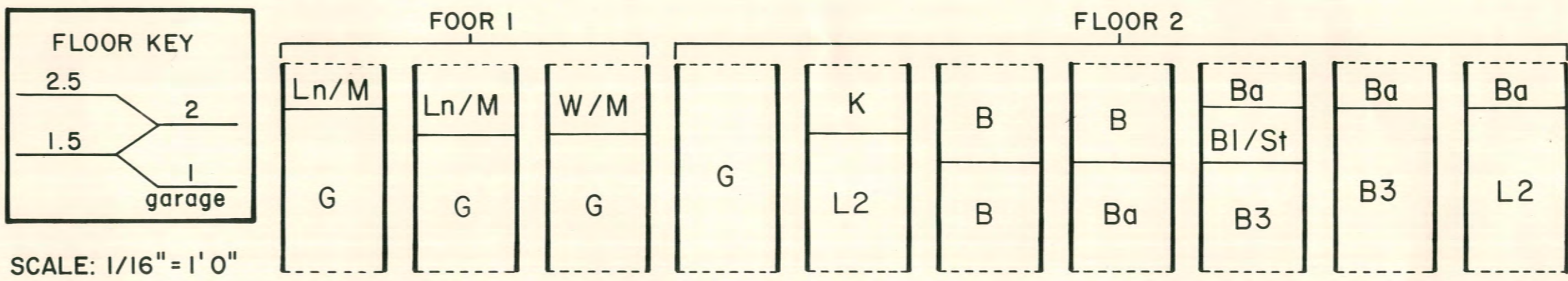
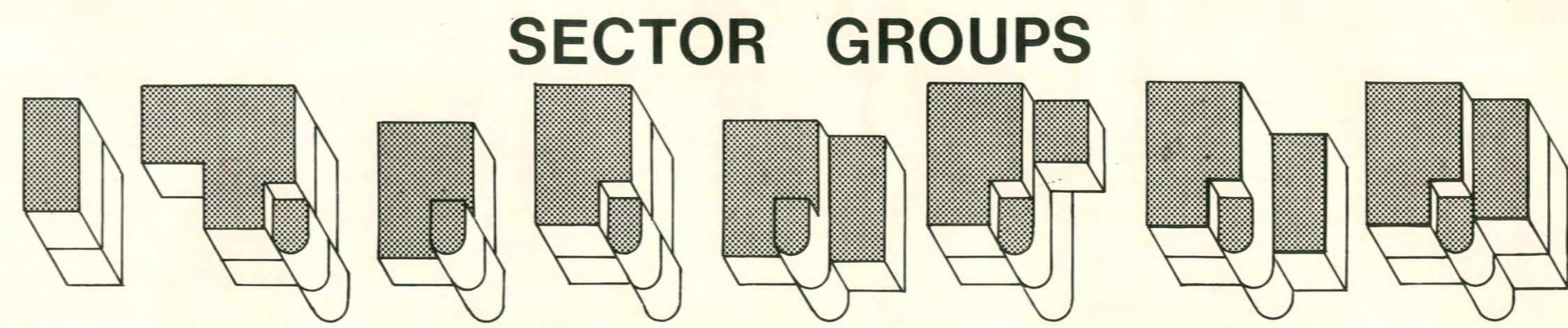
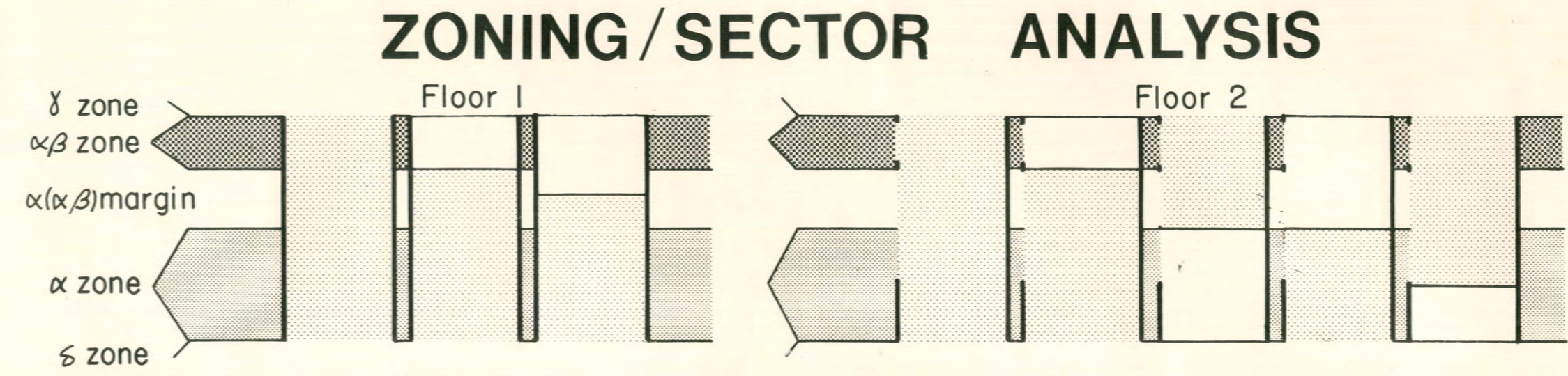
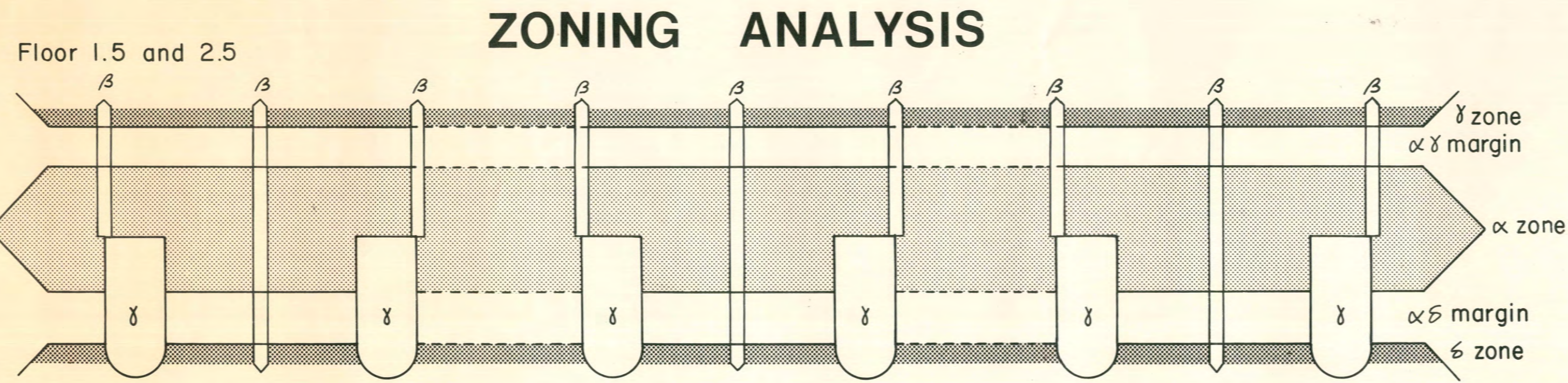


"Tenure Type": direct ownership (urban suburbanites)
 Dwelling Unit Mix: 10% 4br., 50% 3br., 20% 2br., 20% 1br.



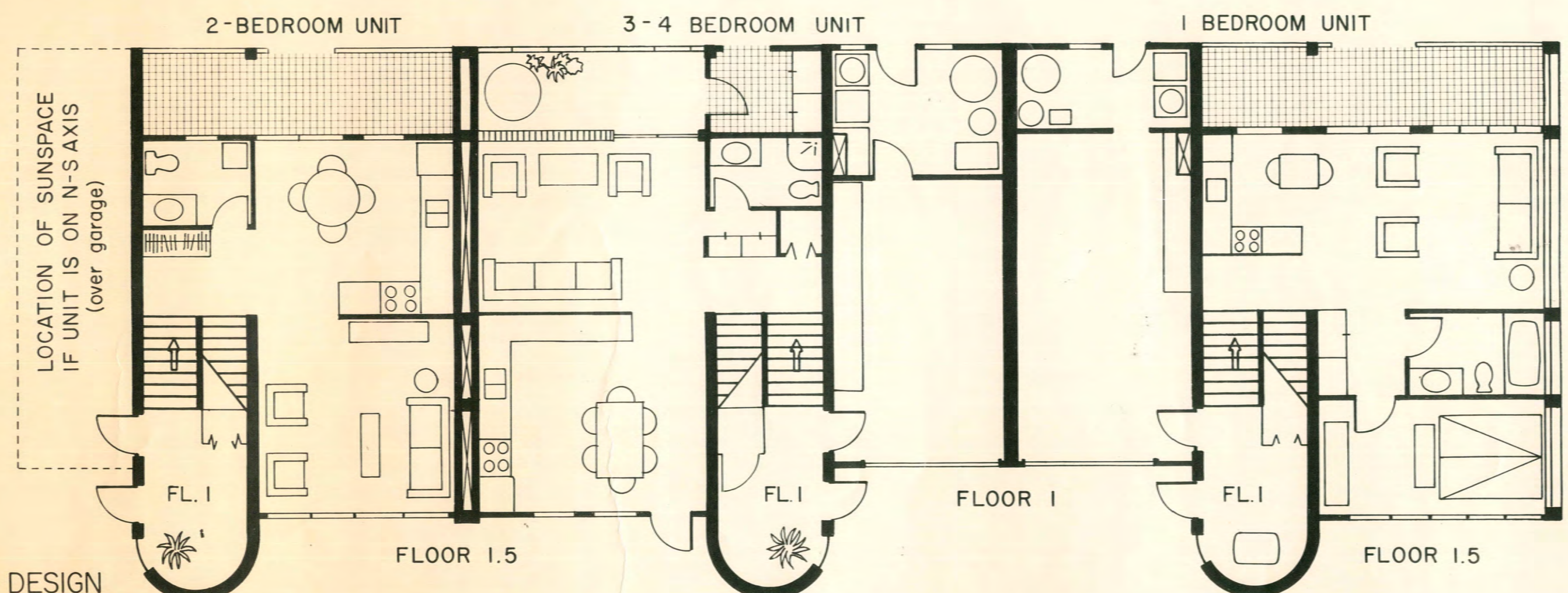
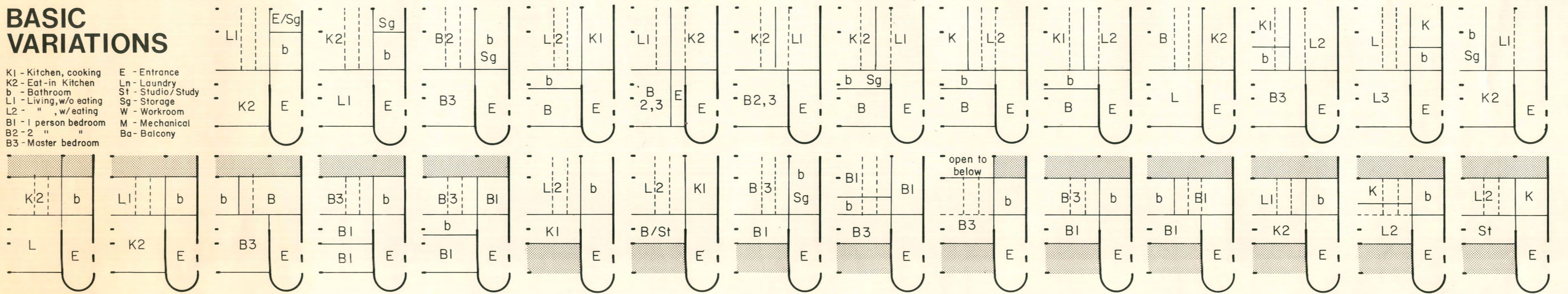
SUPPORT HOUSING

Floor Plan Development



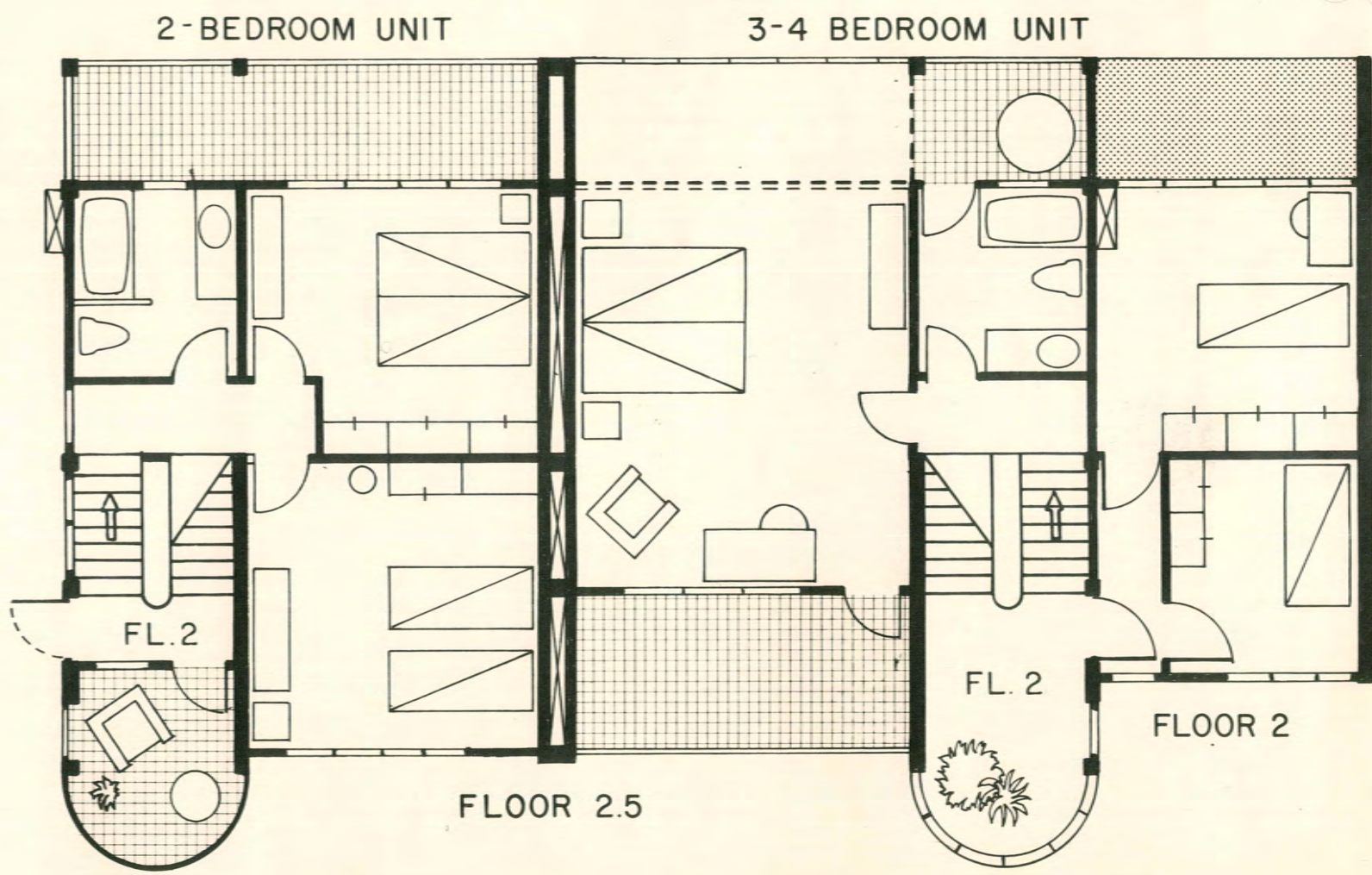
BASIC VARIATIONS

- K1 - Kitchen, cooking
- K2 - Eat-in Kitchen
- b - Bathroom
- L1 - Living, w/o eating
- L2 - " " w/eating
- B1 - 1 person bedroom
- B2 - 2 " "
- B3 - Master bedroom
- E - Entrance
- Ln - Laundry
- St - Studio/Study
- Sg - Storage
- W - Workroom
- M - Mechanical
- Ba - Balcony

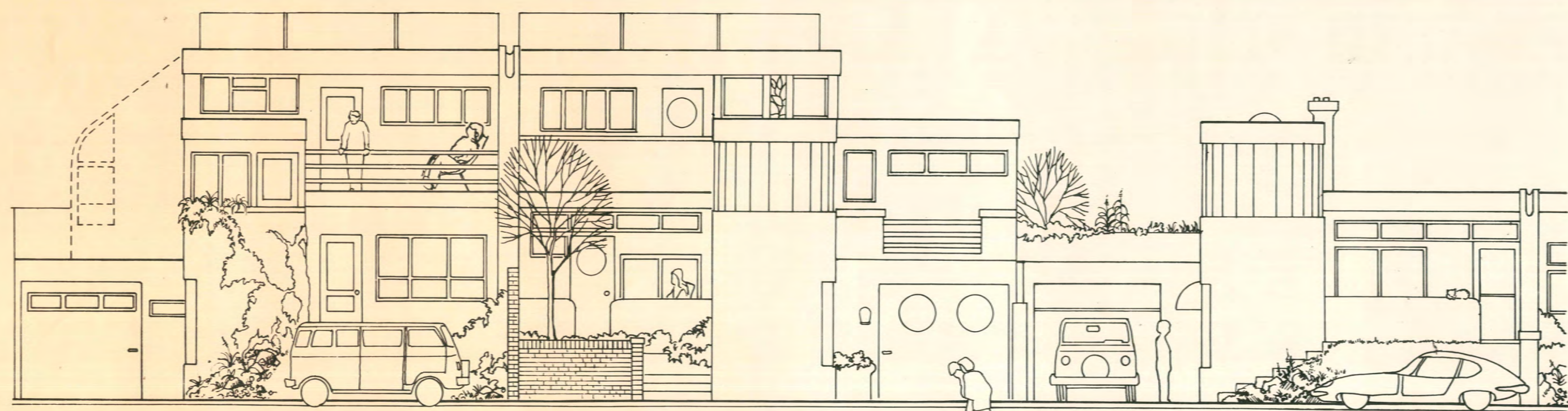


SUB-VARIATIONS

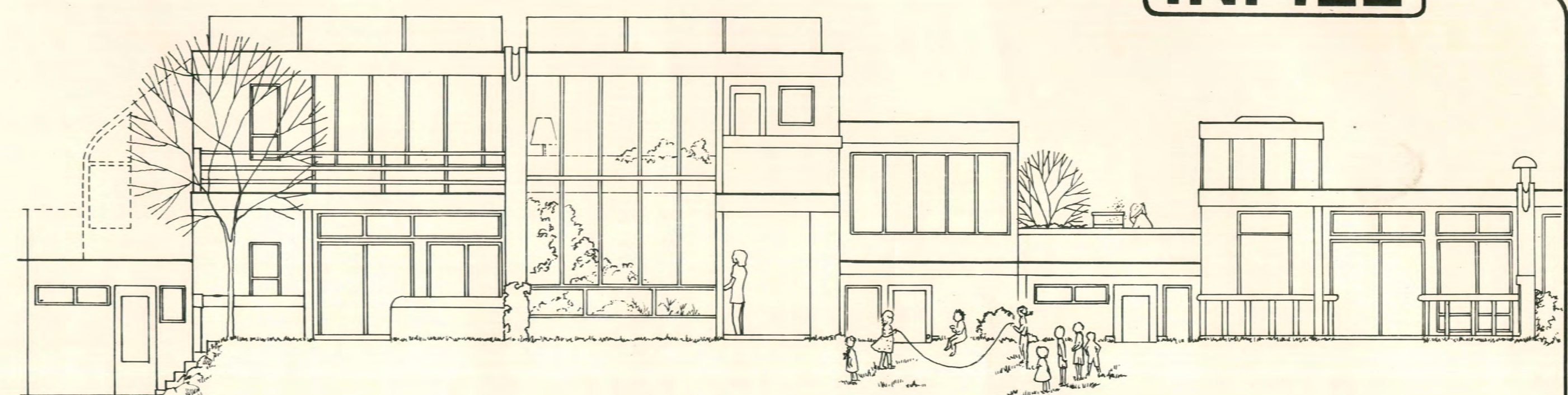
- SCALE: 1/8" = 1'0"
- 1 BEDROOM UNIT: 675 - 753 f²
 - 2 BEDROOM UNIT: 924 - 1155 f²
 - 2-3 BEDROOM UNIT: 1233 - 1350 f²
 - 3-4 BEDROOM UNIT: 1428 - 1597 f²



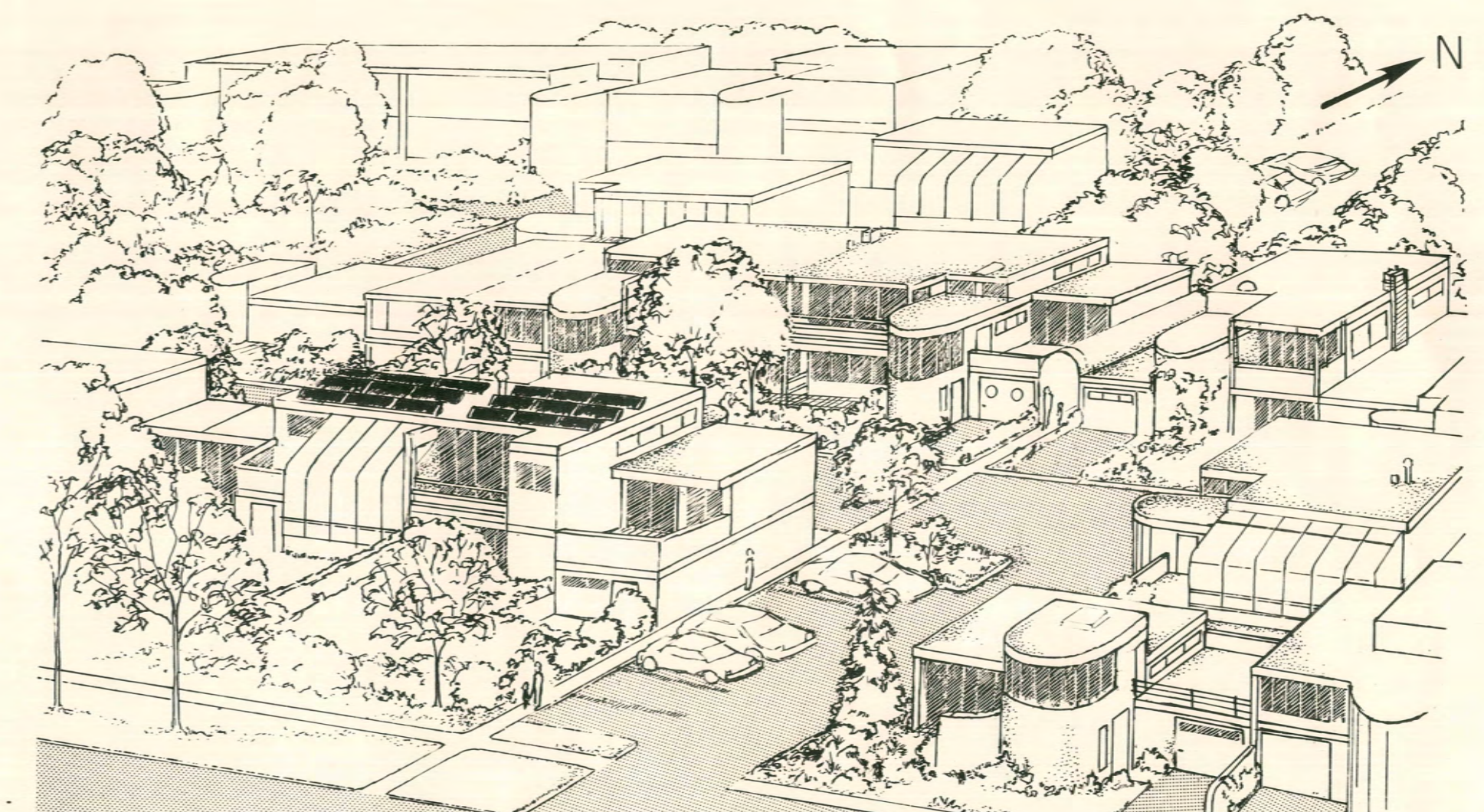
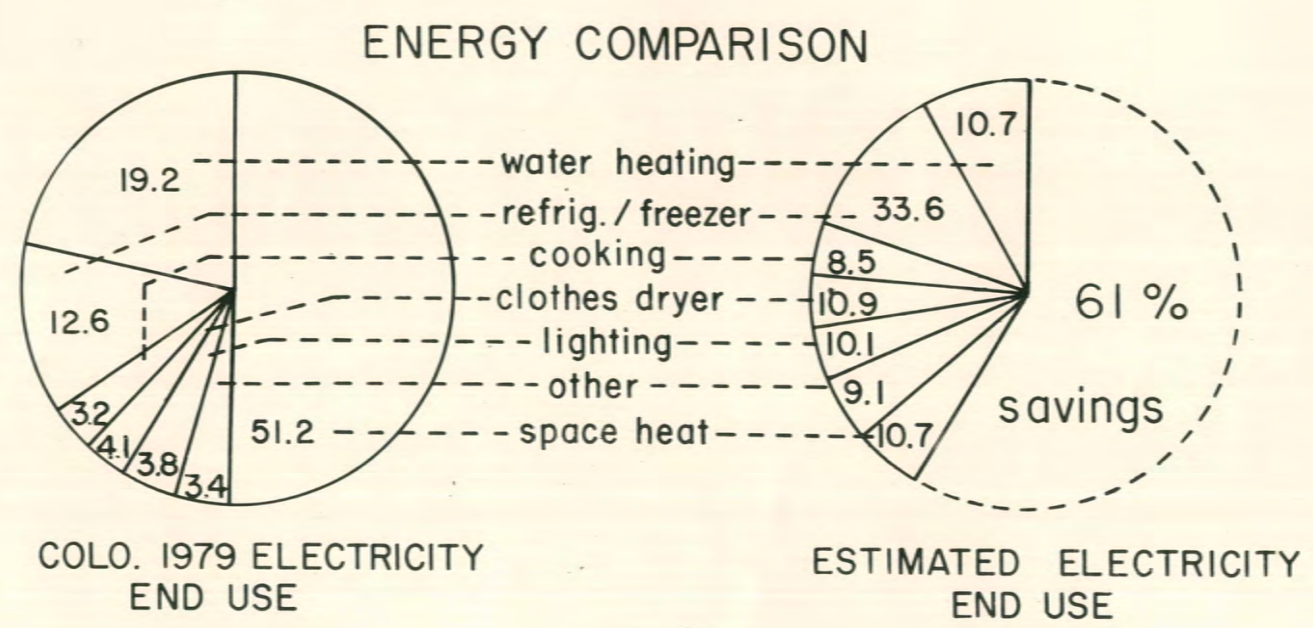
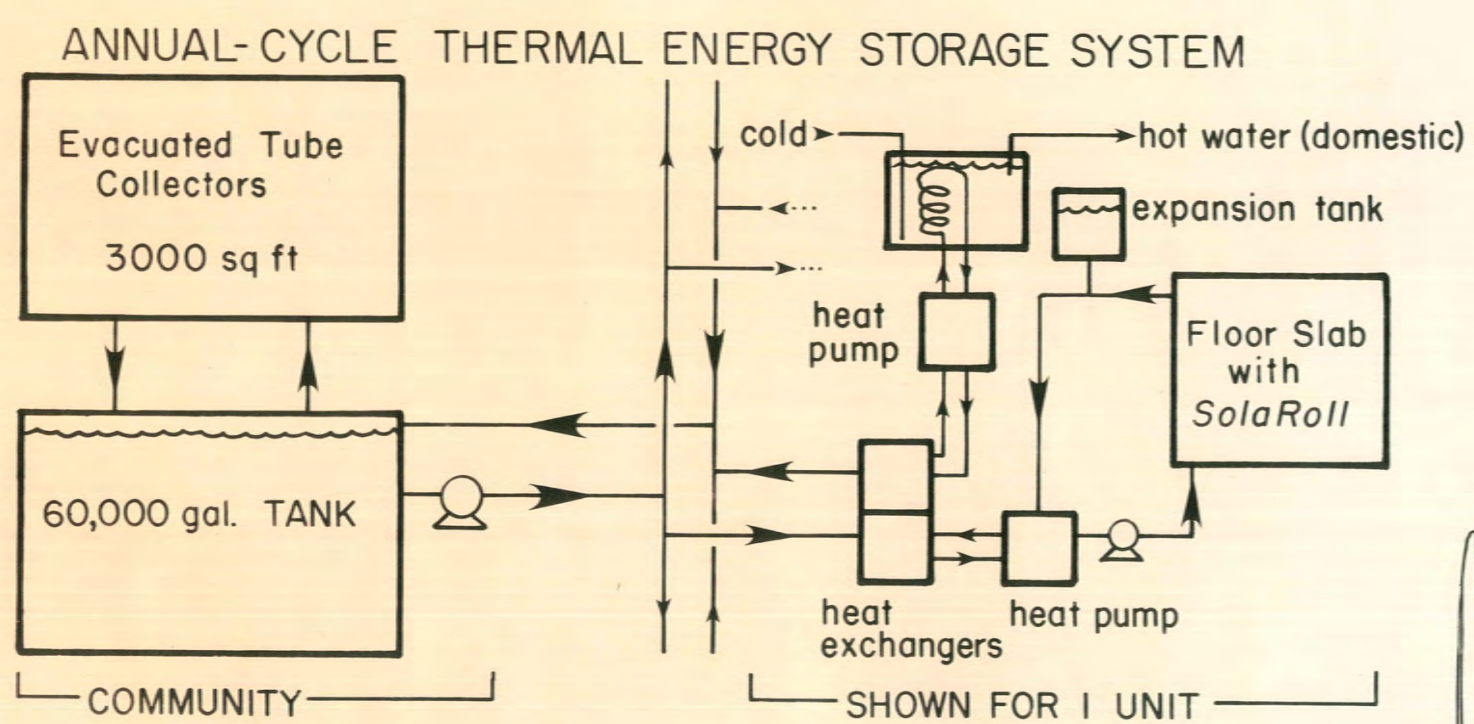
INFILL



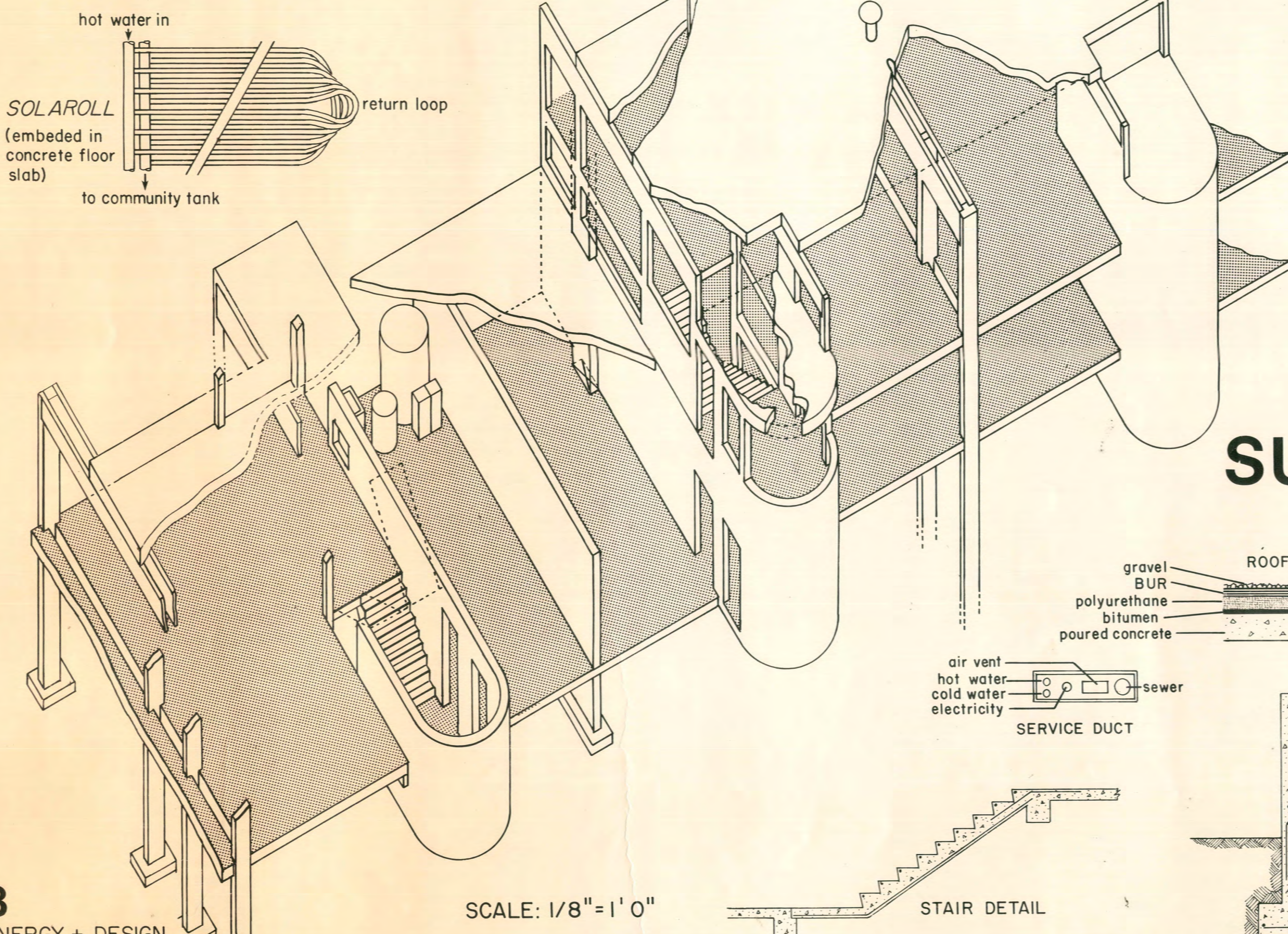
North Elevation



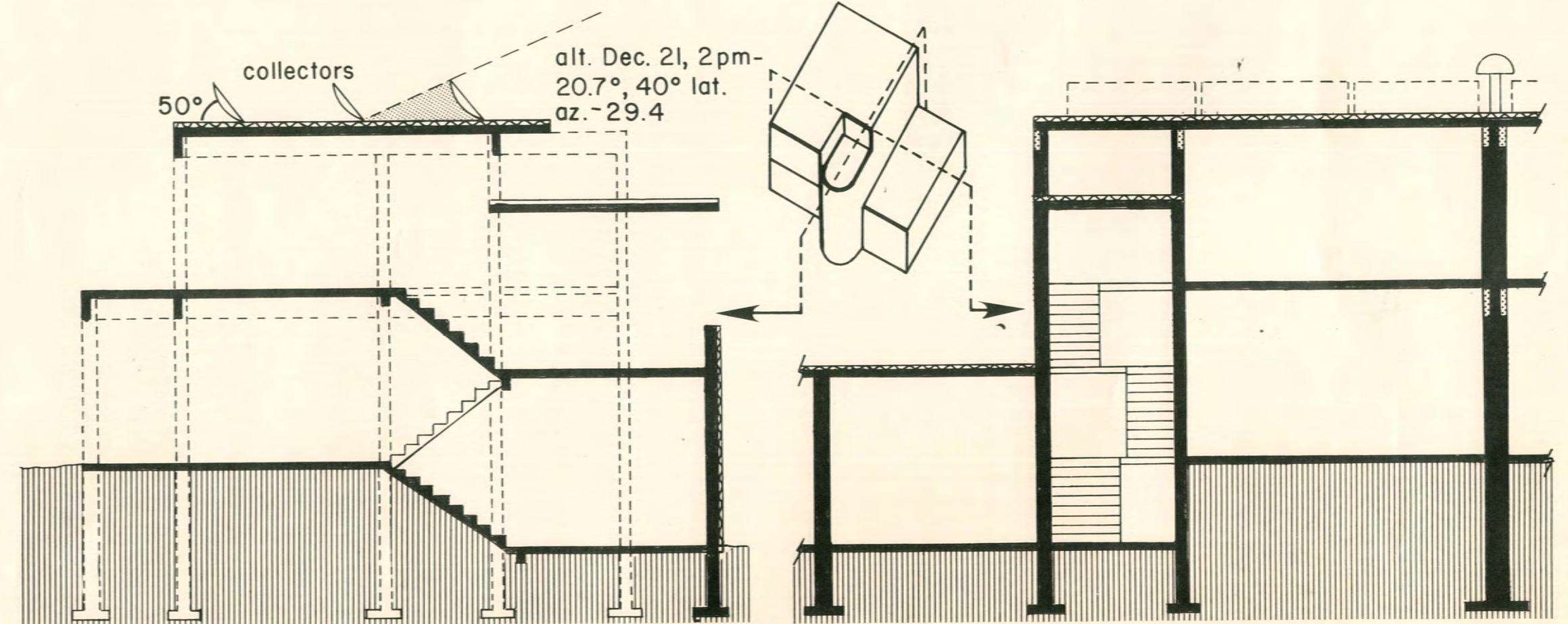
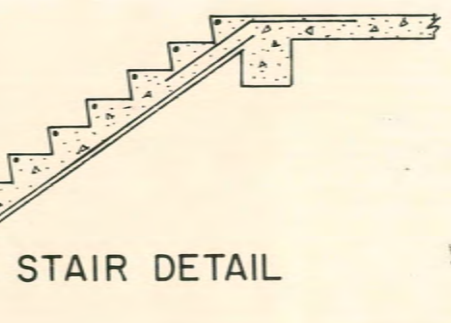
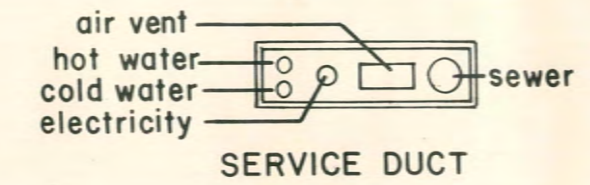
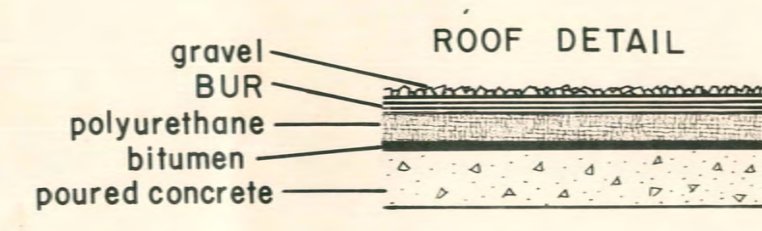
South Elevation



Interior Street Entrance



SUPPORT SYSTEMS



COMPUTER CALC. FOR PASSIVE SYSTEM
 Annual heat load: 27 MMBtu/Yr
 Optimal Collector Size: 226 sq ft
 Solar Fraction: 70%

SCALE: 1/8" = 1' 0"

ARCHITECTURAL DESIGN STUDIO
 SPRING, 1982
 CATHERINE VERHULST

SUPPORT HOUSING

ENVIRONMENTAL DESIGN COLLEGE
 UNIVERSITY OF COLORADO
 BOULDER, COLORADO