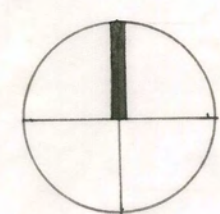
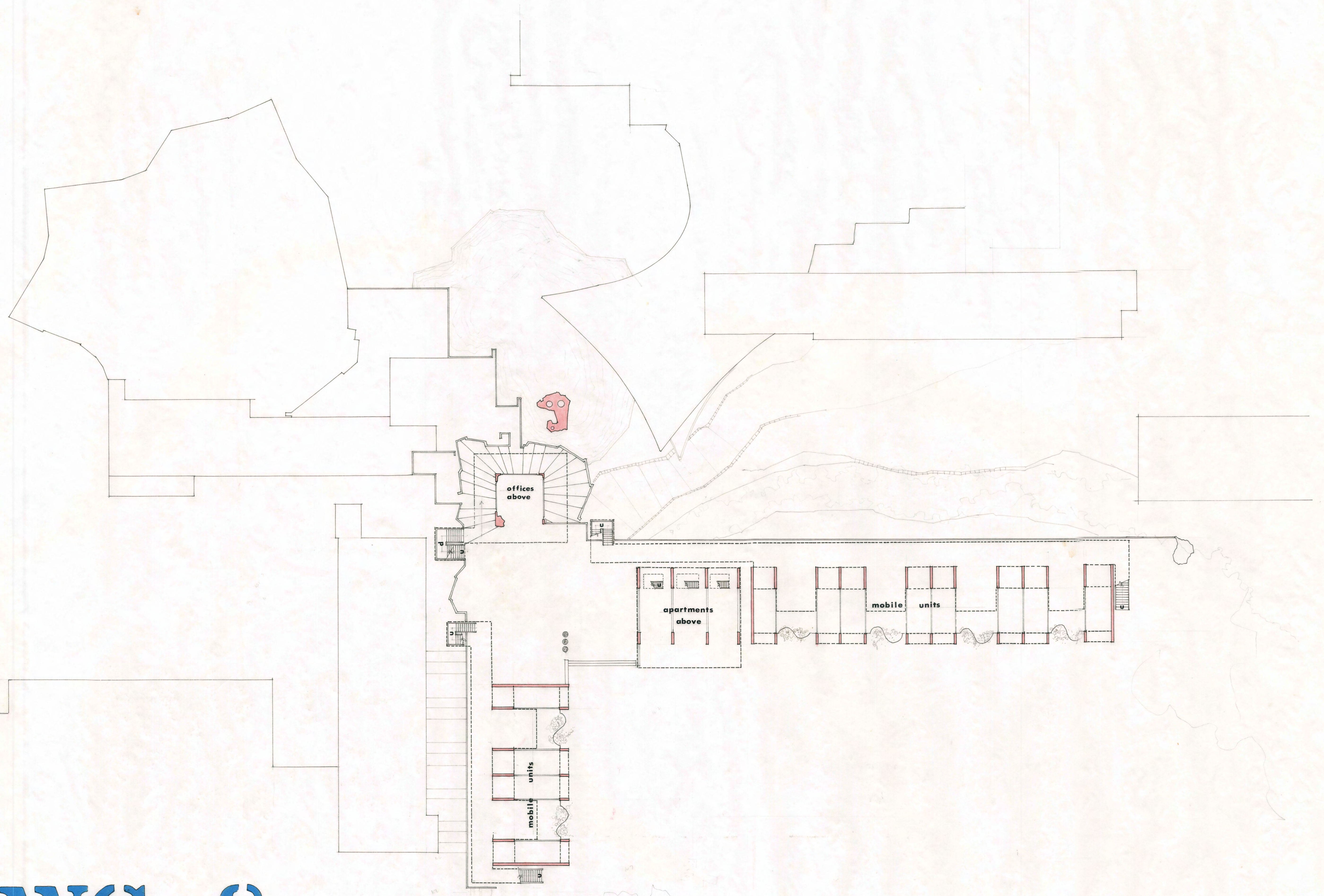


FWC & COMMONS

PLAN 0

1" = 16'

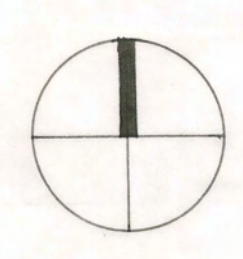


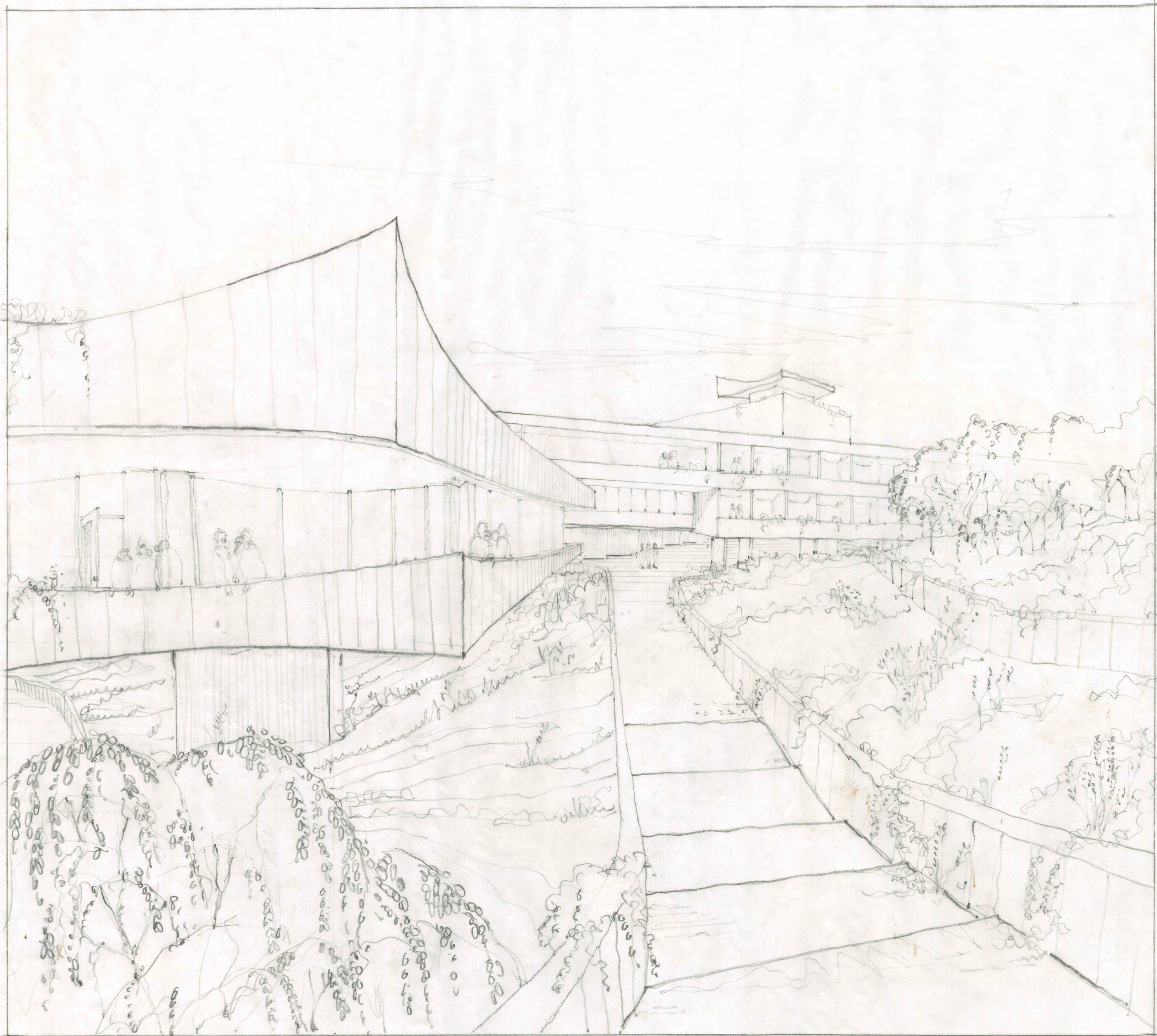


FWC & COMMONS

PLAN 1

1" = 16'





CSEC

PATH FROM COMMONS

THE LIVINGSTON GROUP

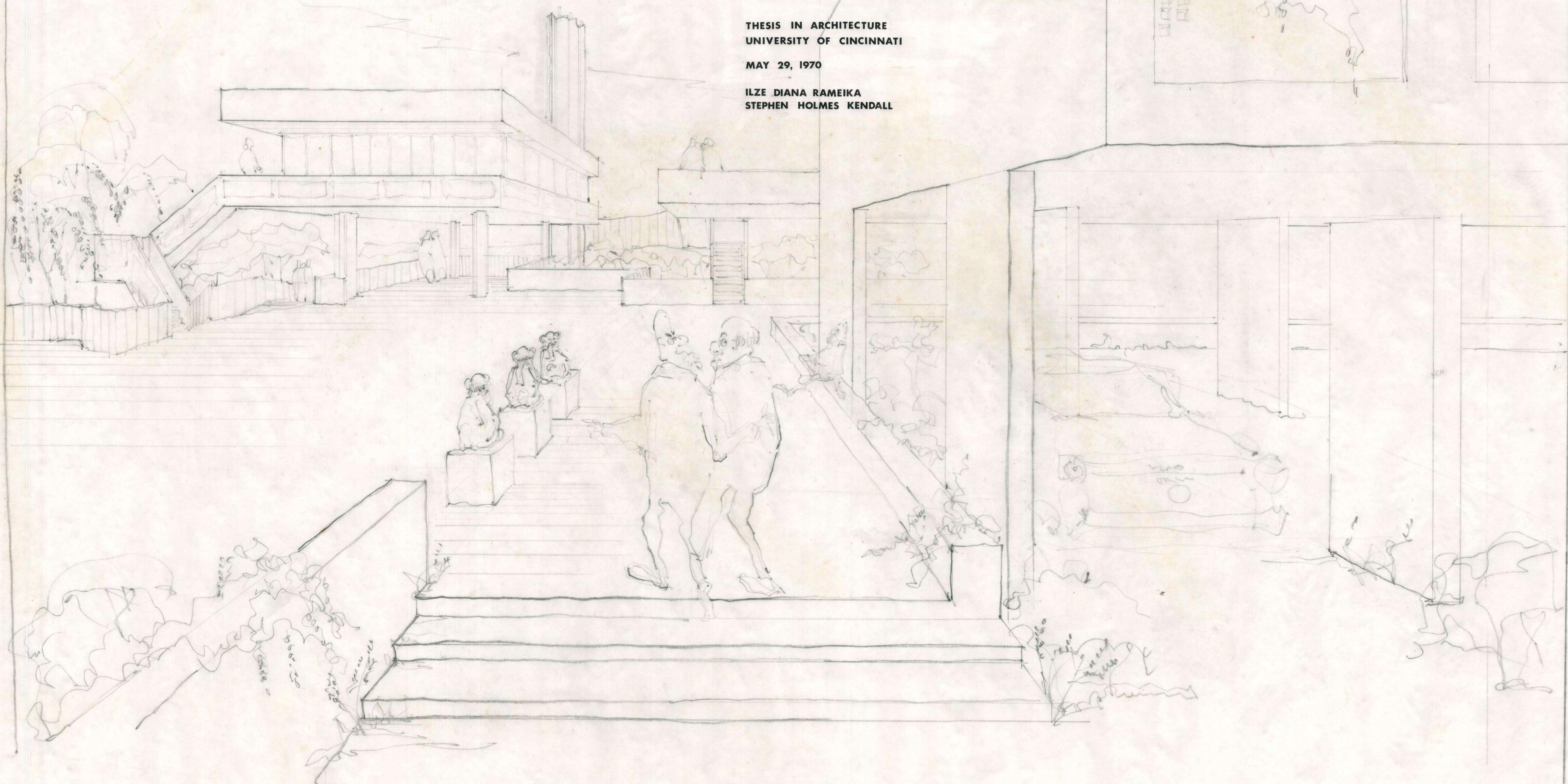
FRIENDS WORLD COLLEGE

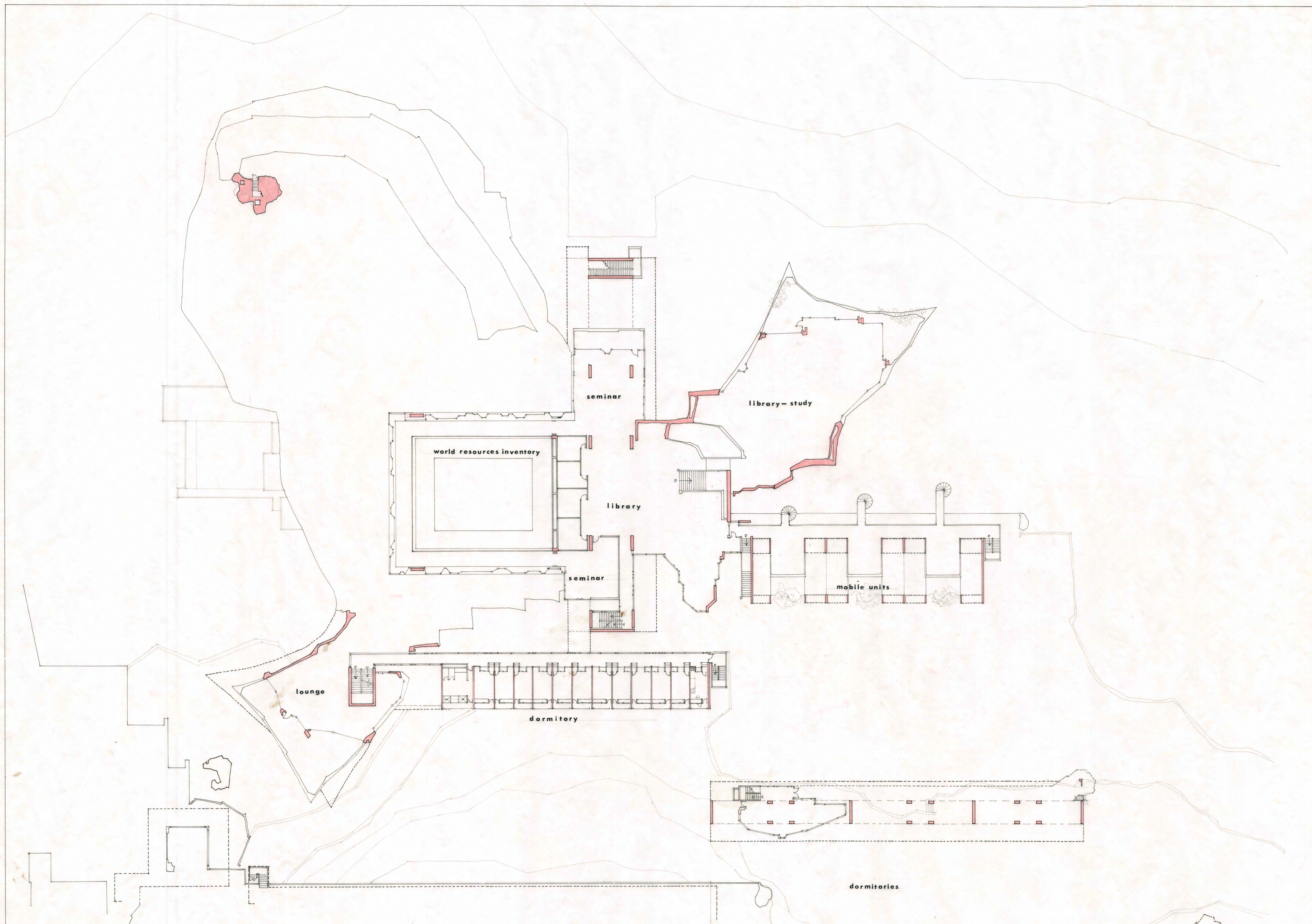
CENTER FOR THE STUDY OF
EMERGING CONCEPTS

EXPERIMENTAL SCHOOL FOR
AESTHETIC EDUCATION

THESIS IN ARCHITECTURE
UNIVERSITY OF CINCINNATI
MAY 29, 1970

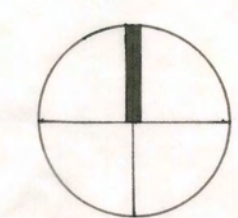
ILZE DIANA RAMEIKA
STEPHEN HOLMES KENDALL



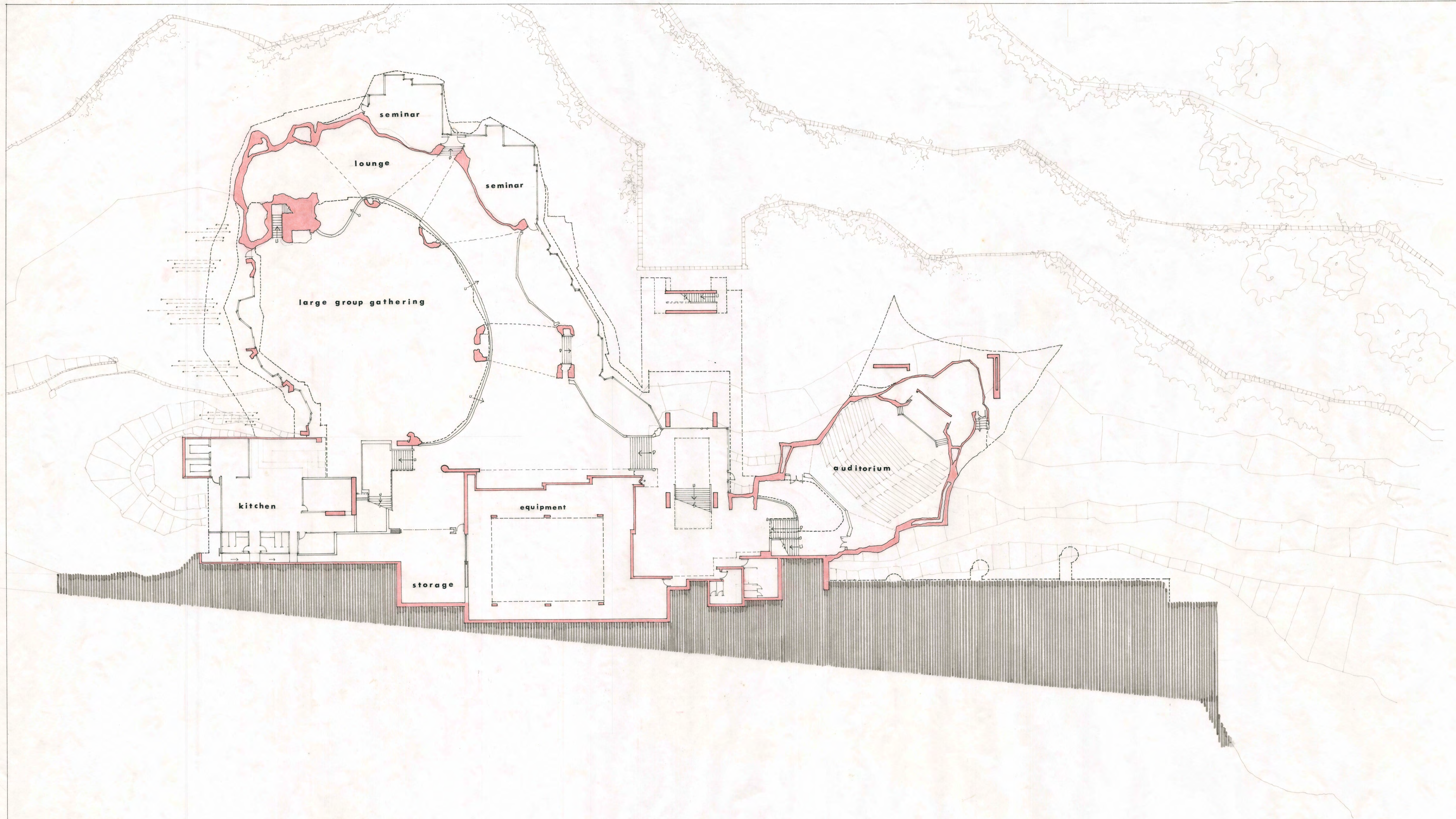


CSEC

PLAN 2



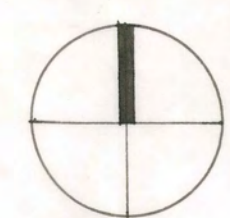
1" = 16'

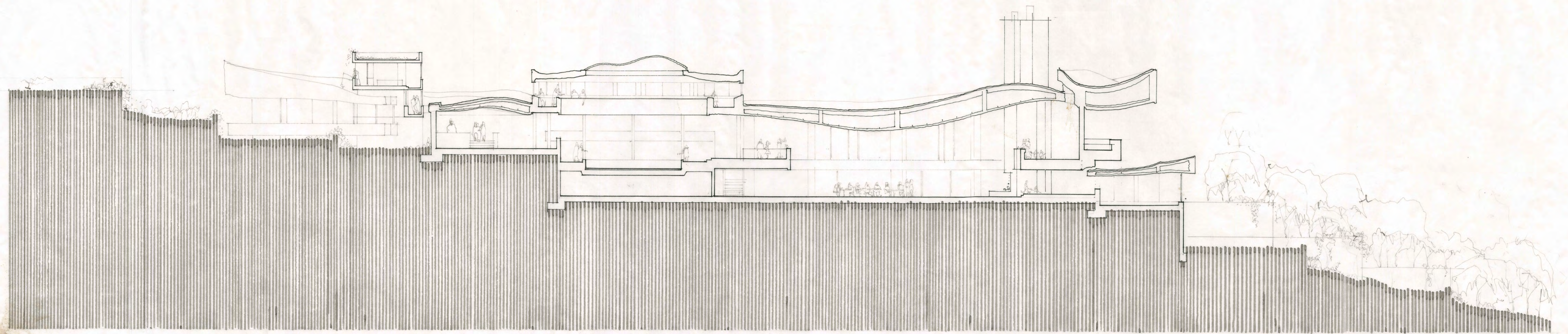
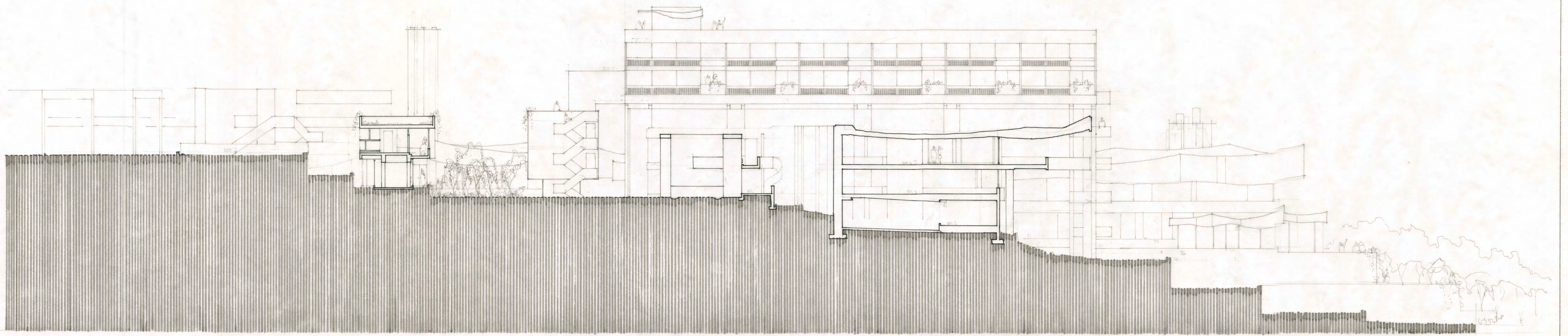


CSEC

PLAN 0

1"=16'

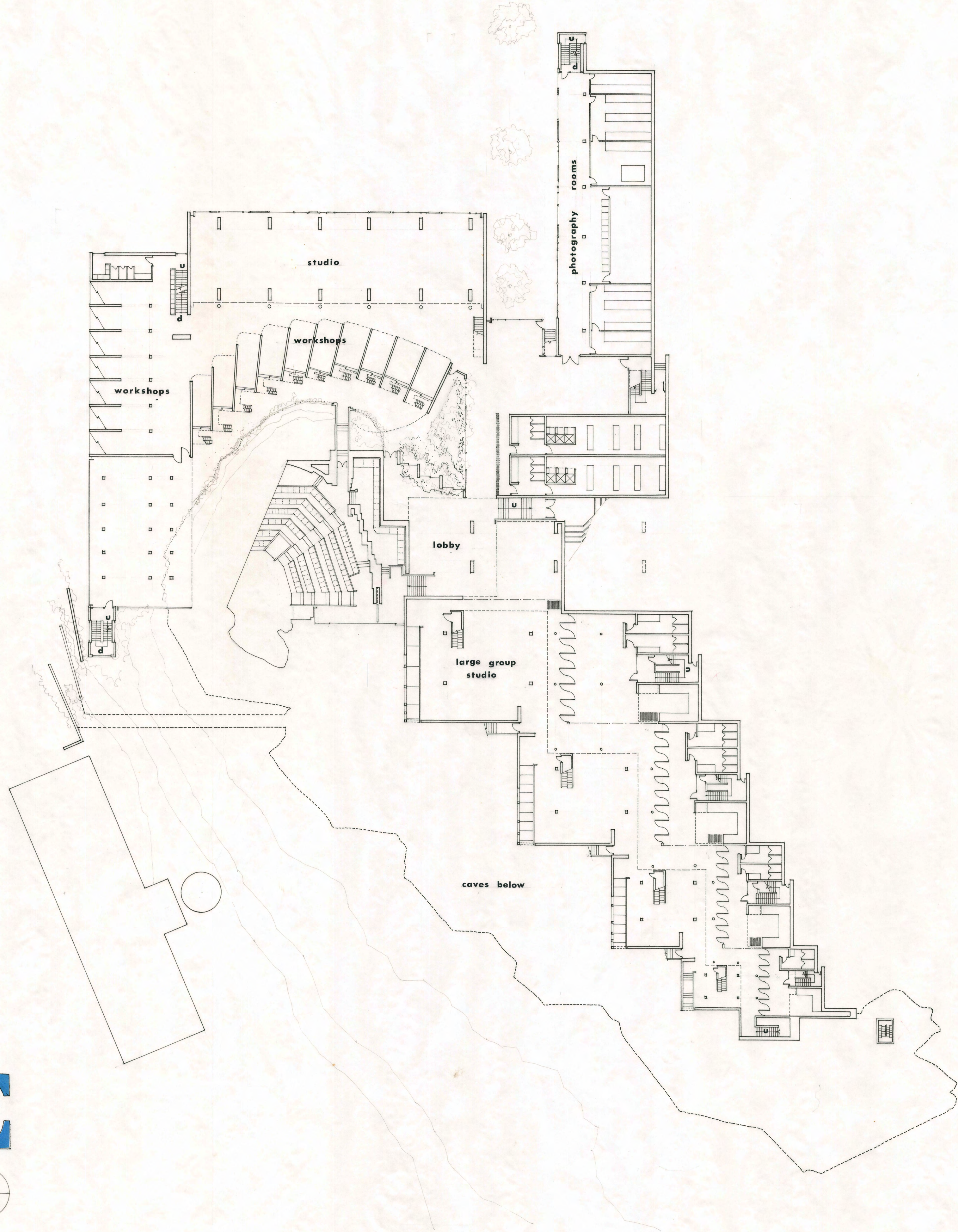




CSEC

SECTIONS

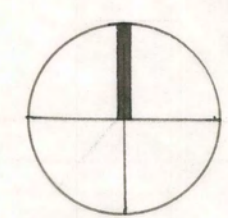
1" = 16'

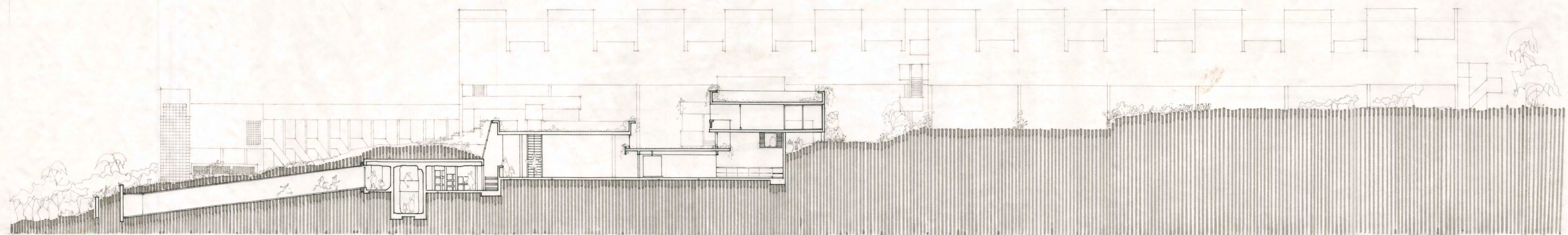
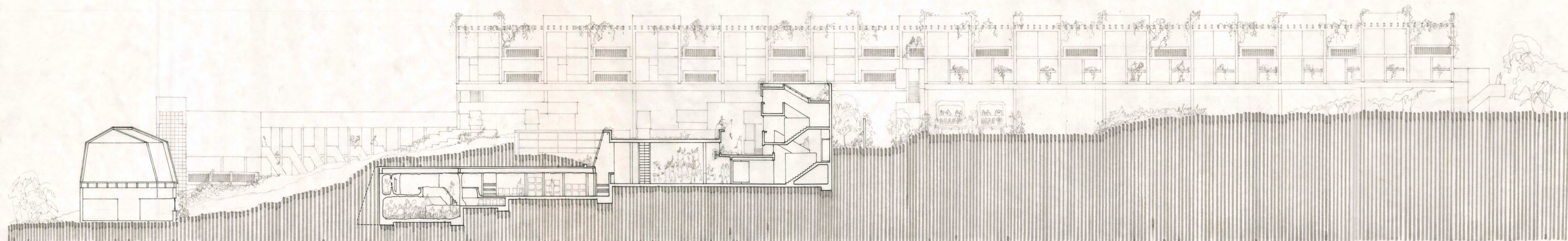
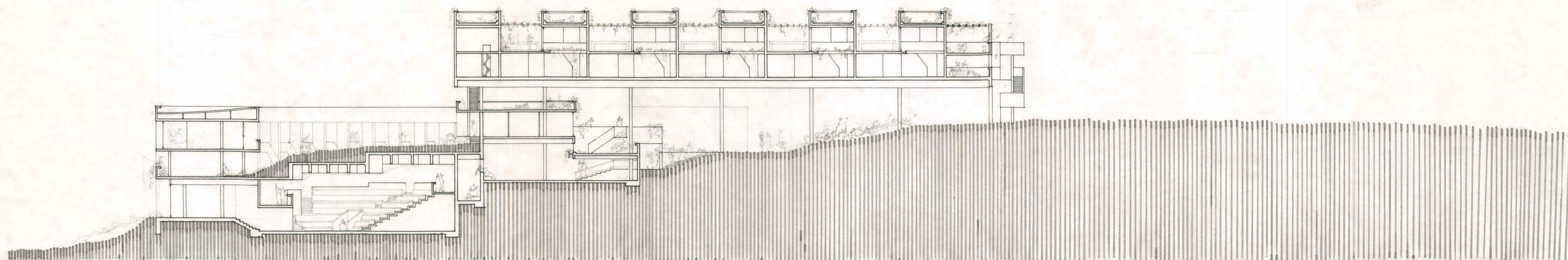


ESAE

PLAN 1

1" = 16'



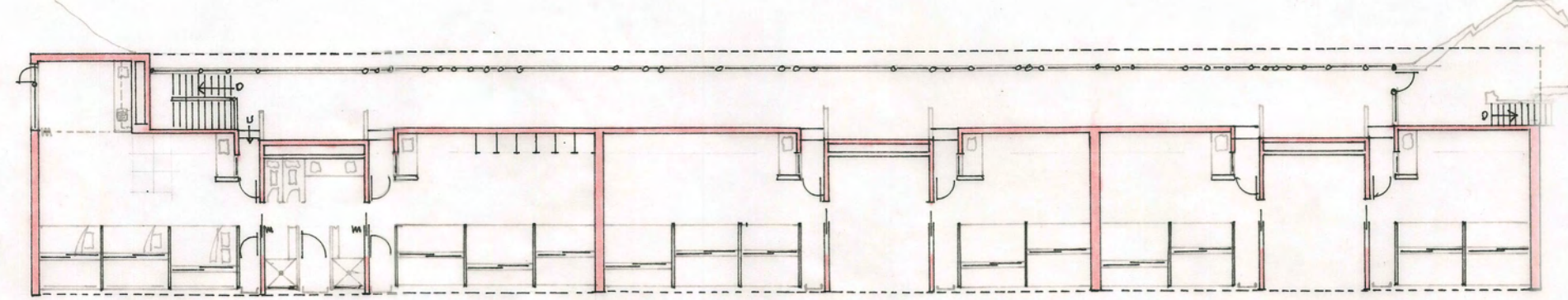
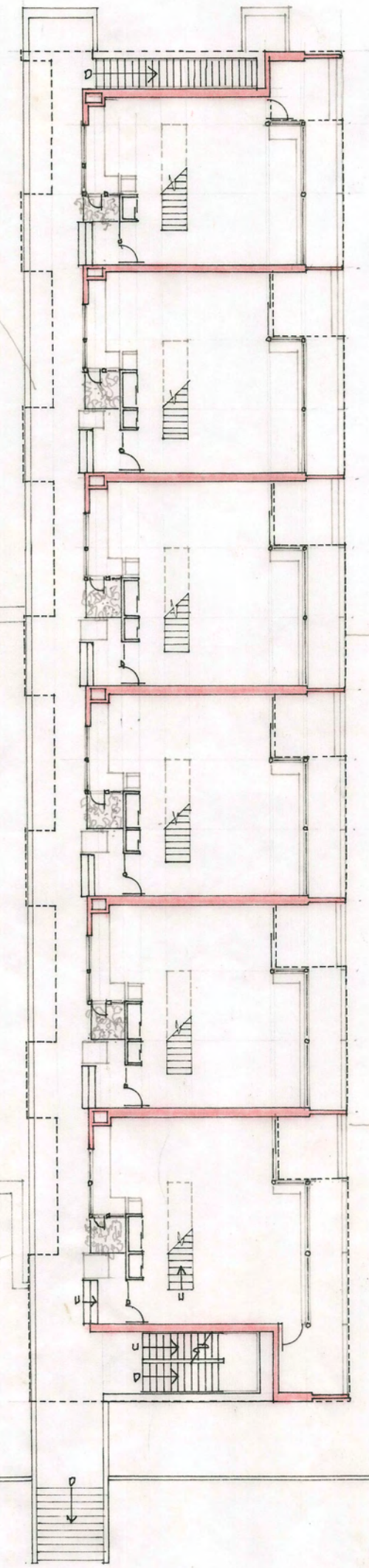


ESAE

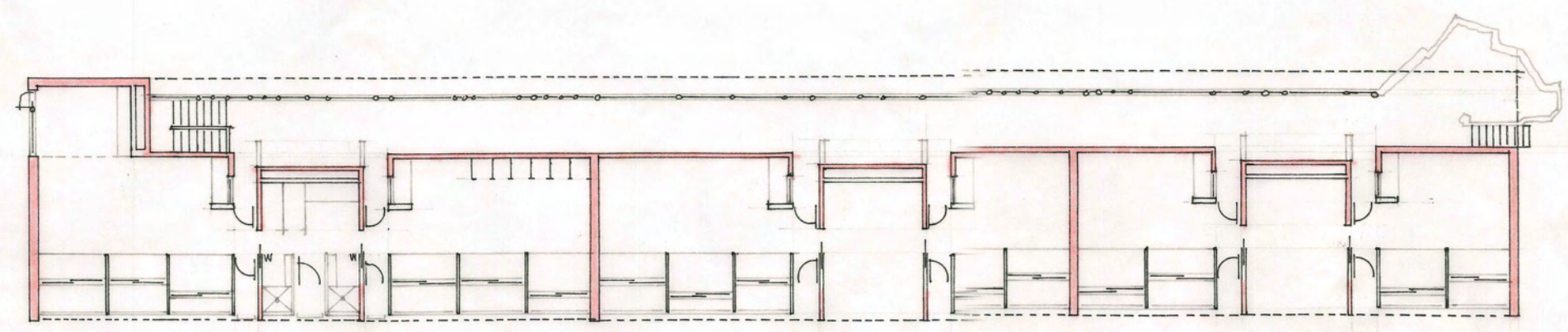
SECTIONS

1" = 16'

scholar's
apartments



dormitories

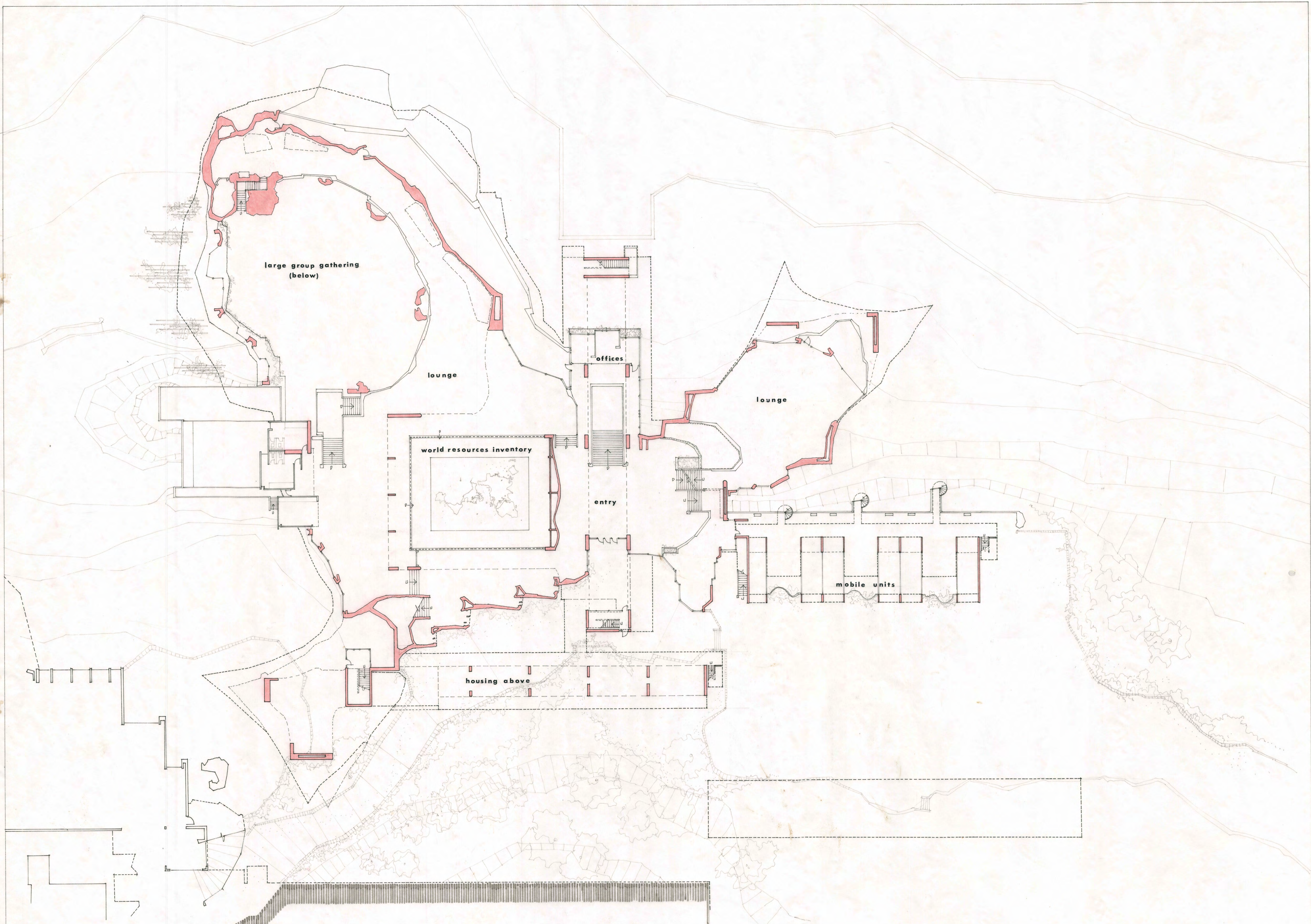


CSEC

PLAN 3

1" = 16'





CSEC

PLAN 1

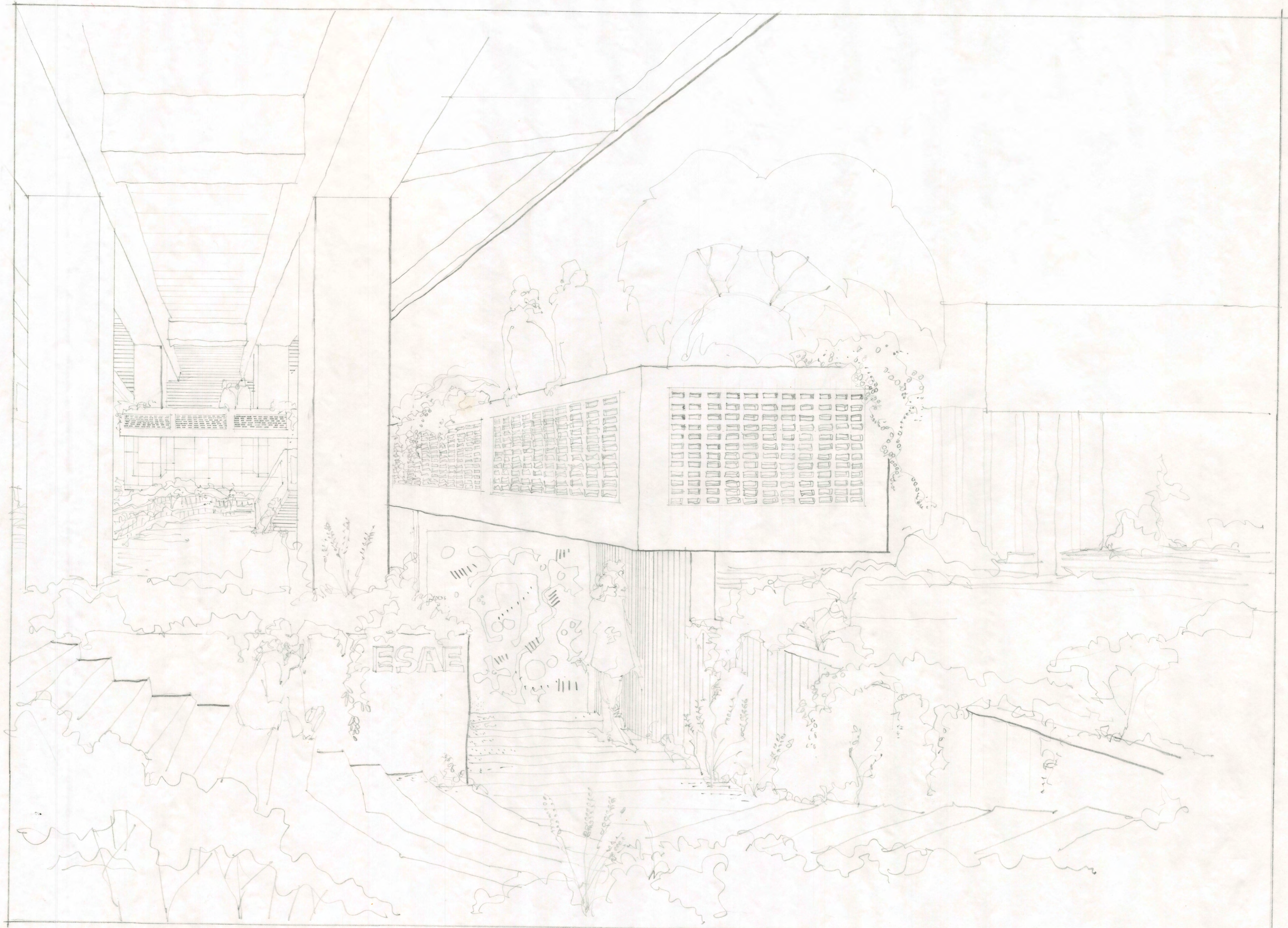
1" = 16'



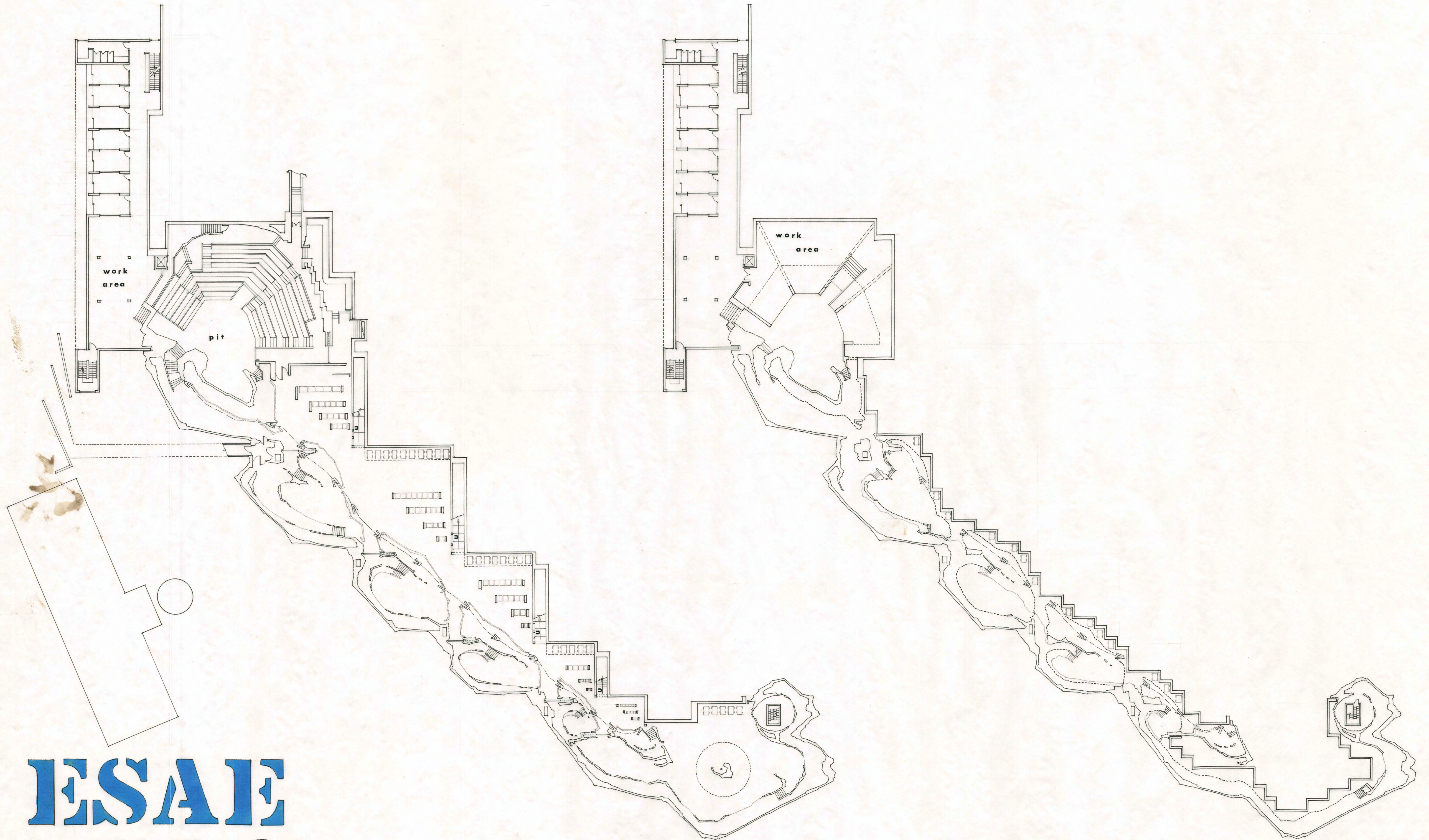


THE LIVINGSTON GROUP

PLAN
1" = 40'



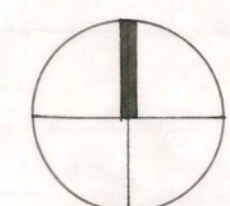
ESAE
ENTRANCE



ESAE

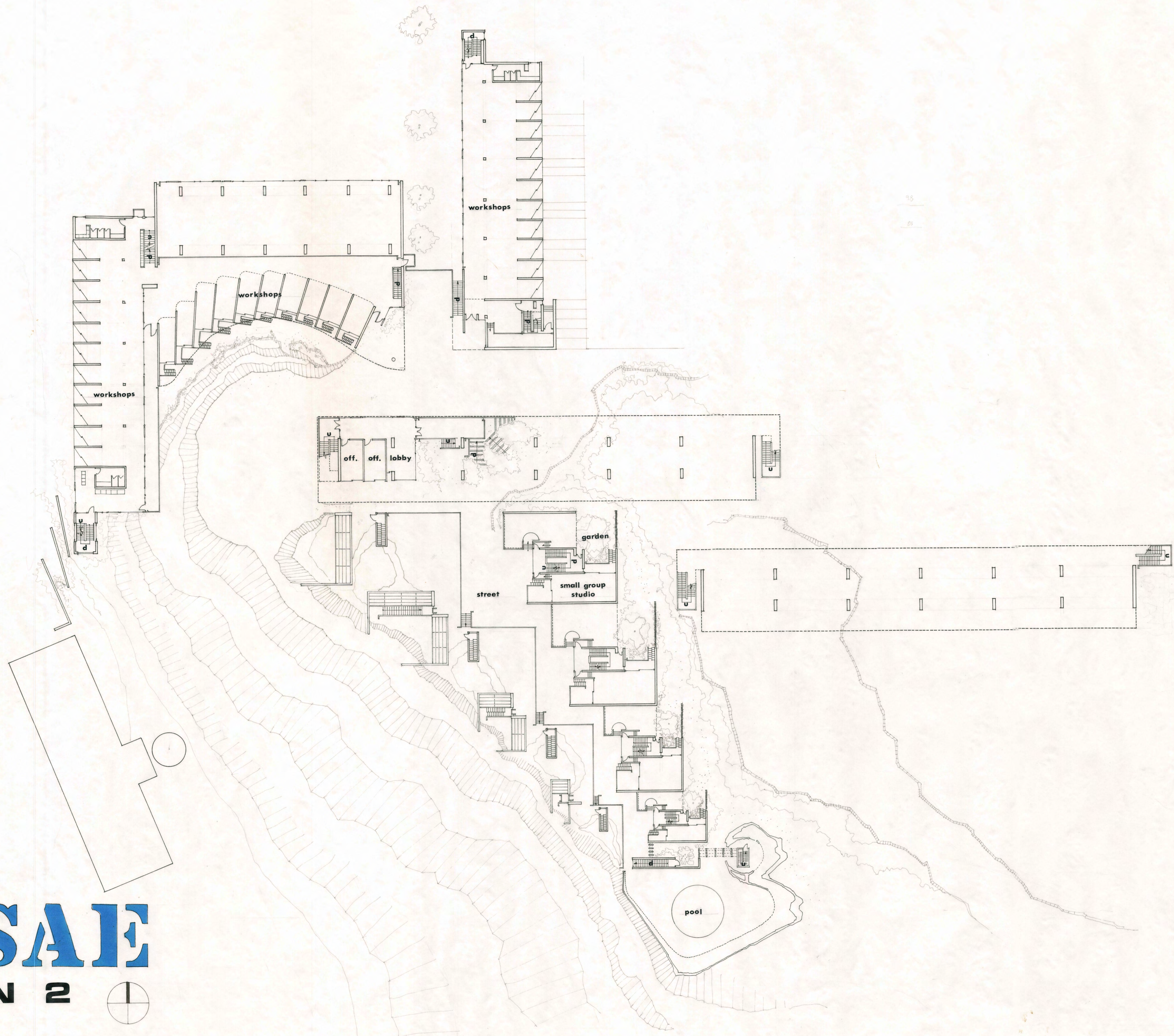
PLAN 0

1" = 16'



LEVEL 0

LEVEL 00

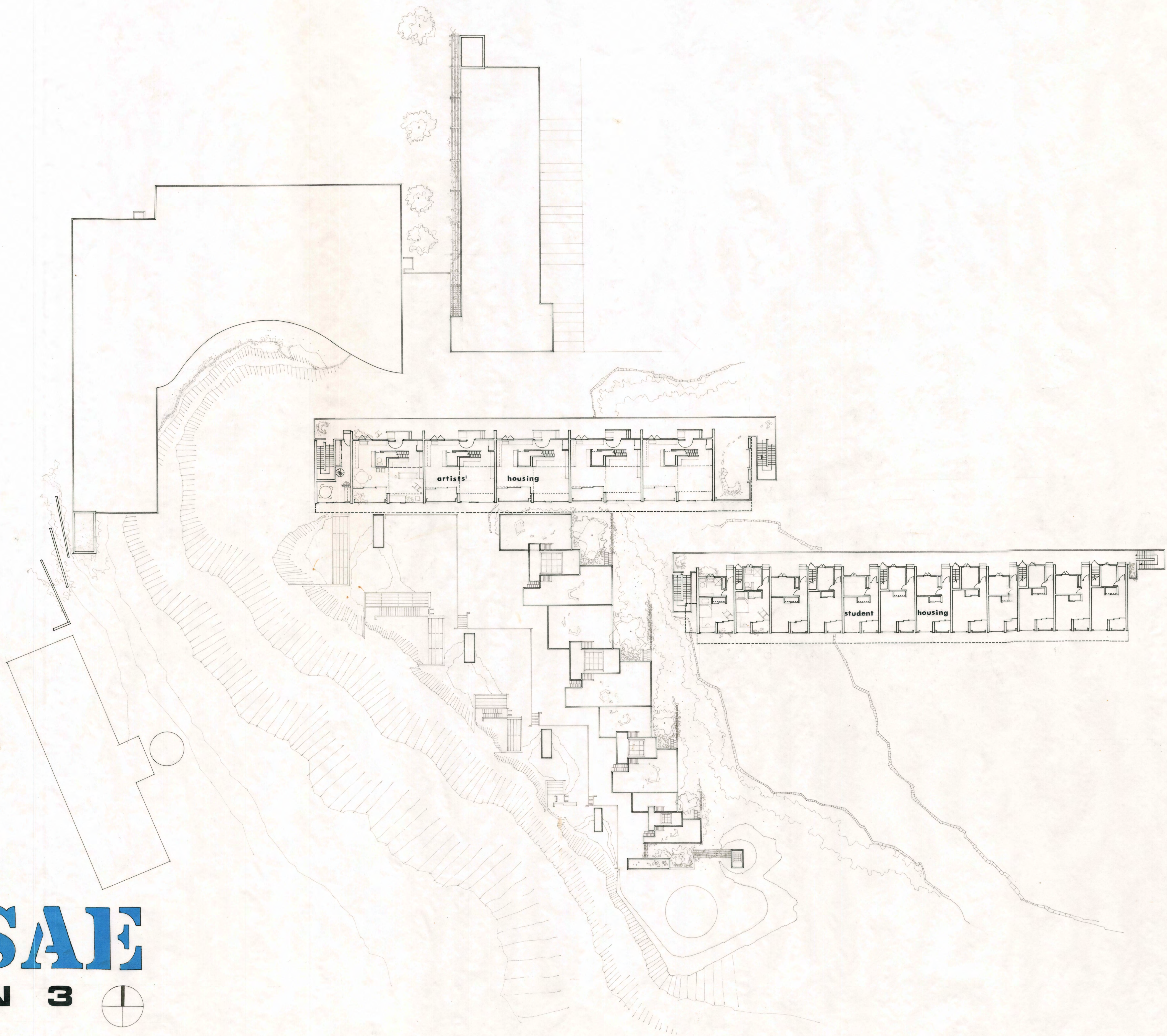


ESAE

PLAN 2

1" = 16'



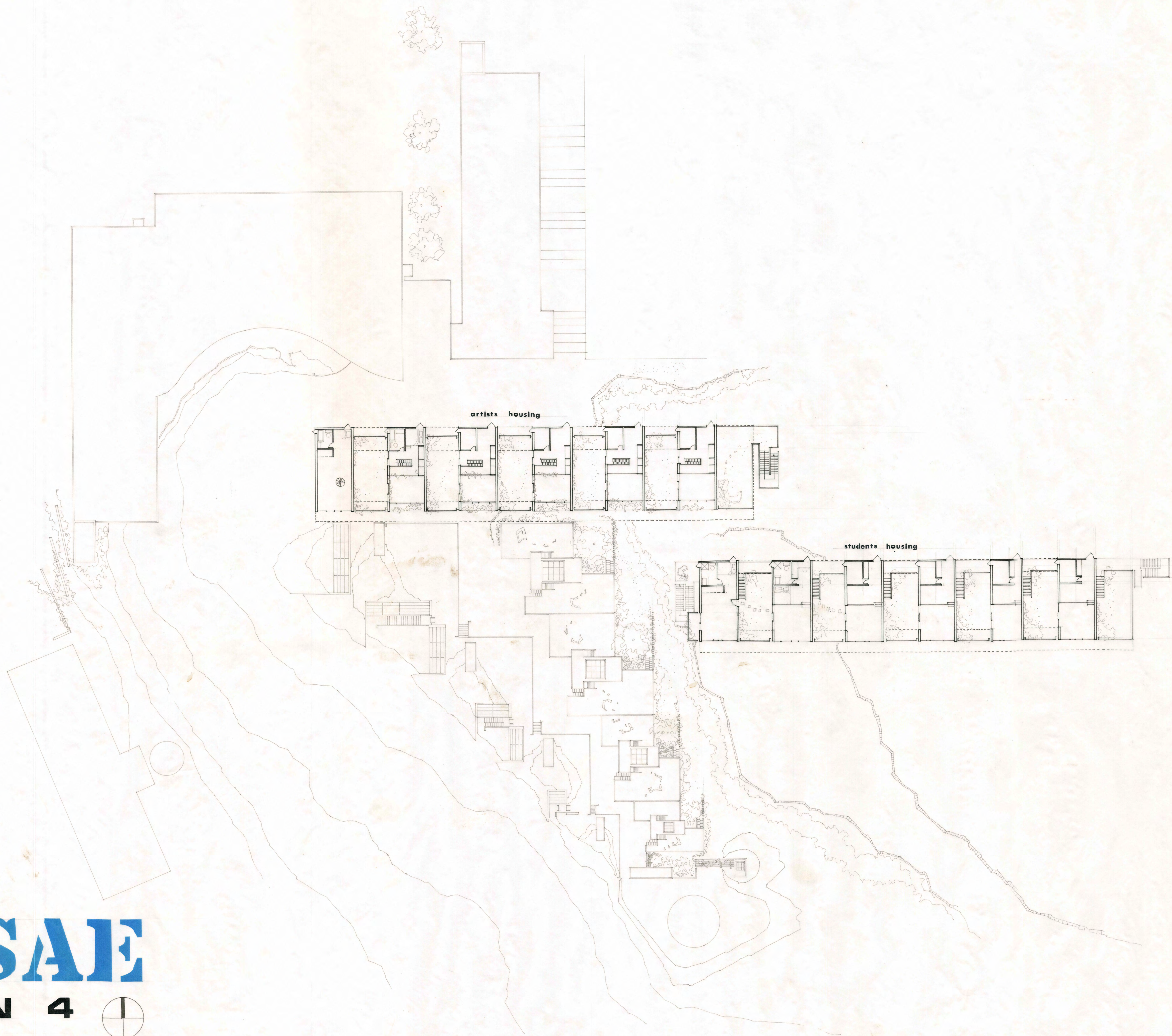


ESAE

PLAN 3

1" = 16'





ESAE

PLAN 4

1" = 16'

